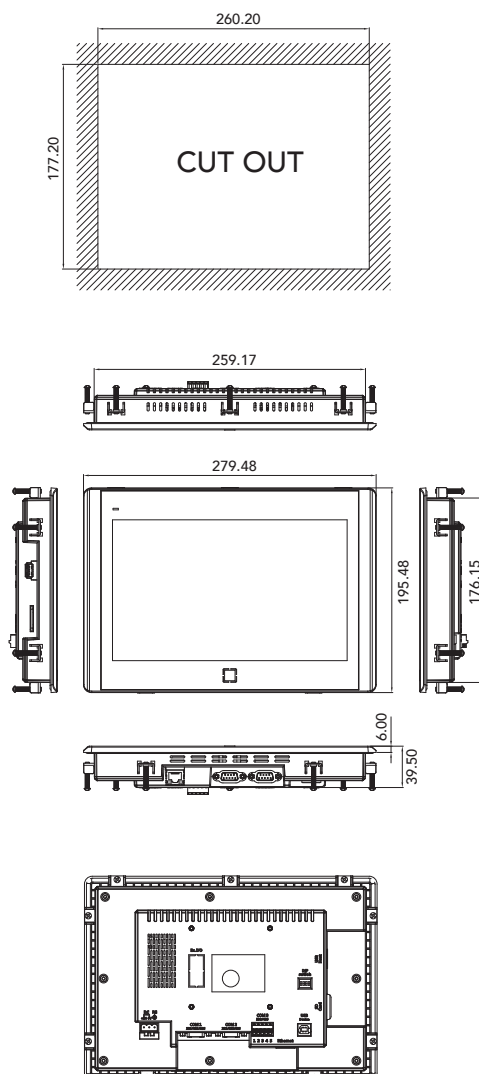
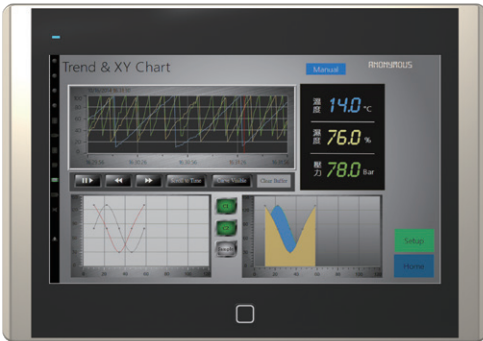


# Industrial HMI Operator Panel S10

NOVAKON

S SERIES



## Features

- NXP ARM® Cortex™-A9, i.MX 6Dual-Lite (1GHz)
- 10.2" TFT 800 x 480, 350 cd/m<sup>2</sup>, 20,000 hours
- 19.2 ~ 28.8V Isolated Power Input
- Painted plastic chassis, fan-less design
- Panel or VESA 75mm x 75 mm mount, IP65 front bezel
- ESD Protection : Level 4 (Contact Discharge 8KV, Air-Gap Discharge 15KV), Class A
- Suitable for industrial applications

## Specifications

<b>CPU</b>	NXP ARM® Cortex™-A9, i.MX 6Dual-Lite (1GHz)
<b>Memory</b>	1GB SDRAM
<b>Storage</b>	4GB eMMC
<b>I/O</b>	1 x USB 2.0 host Type A 1 x USB 2.0 device Type B 2 x RS232/422/485, COM1, COM2 1 x RS232/485, COM3 or CAN Bus (Option) 1 x 10/100/1000 Mbit Ethernet Port 1 x SD Card Slot
<b>Display</b>	10.2" TFT, 800 x 480 Luminance 350 (cd/m <sup>2</sup> ) View angle 130/110 (H°/V°) Backlight Lifetime 20,000 hours Contrast ratio 300:1
<b>Touch Screen</b>	4-wire resistive touch
<b>Power</b>	19.2 ~ 28.8V Isolated Power Input
<b>Construction</b>	Painted Plastic
<b>Net Weight(Kgs)</b>	1.1 Kg
<b>Mounting</b>	Panel or VESA 75 x 75 mount
<b>Dimensions (mm)</b>	279.5(W) x 195.5(H) x 39.5(D)
<b>Operating Temp.</b>	0°C ~ 50°C
<b>Storage Temp.</b>	-20°C ~ 60°C
<b>Humidity</b>	10% to 90% @ 40°C, (non-condensing)
<b>ESD Protection</b>	Level 4 (Contact Discharge 8KV, Air-Gap Discharge 15KV), Class A
<b>Certification</b>	CE/FCC (EN 61000-6-4, EN 61000-6-2)

## Ordering Information

### S10F-N

10.2" TFT 800 x 480 fan-less HMI with ARM Cortex-A9 (1GHz Dual-Lite) CPU, 1GB RAM, 4GB eMMC, resistive touch screen, Ethernet, 19.2 ~ 28.8V isolated power, painted plastic chassis and IP65 front bezel