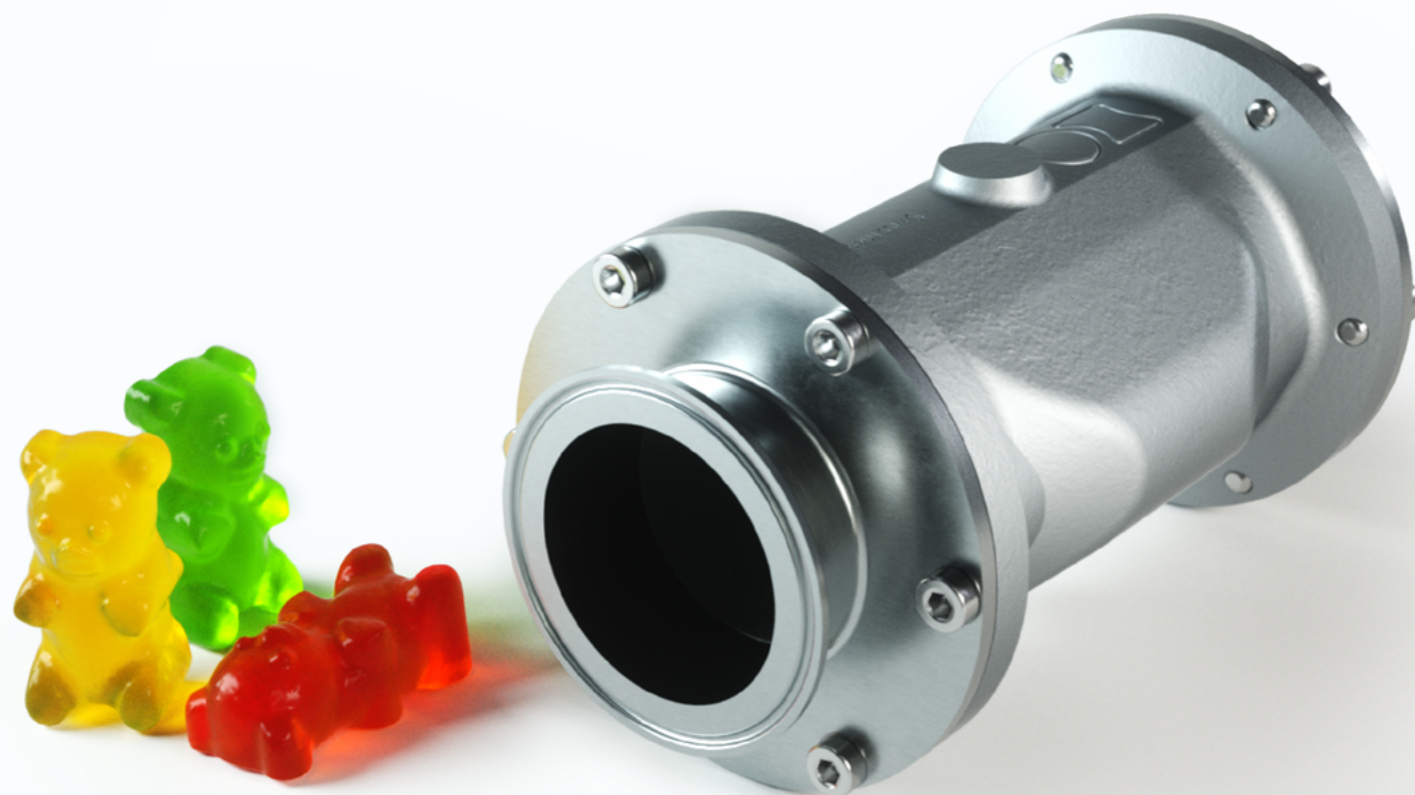
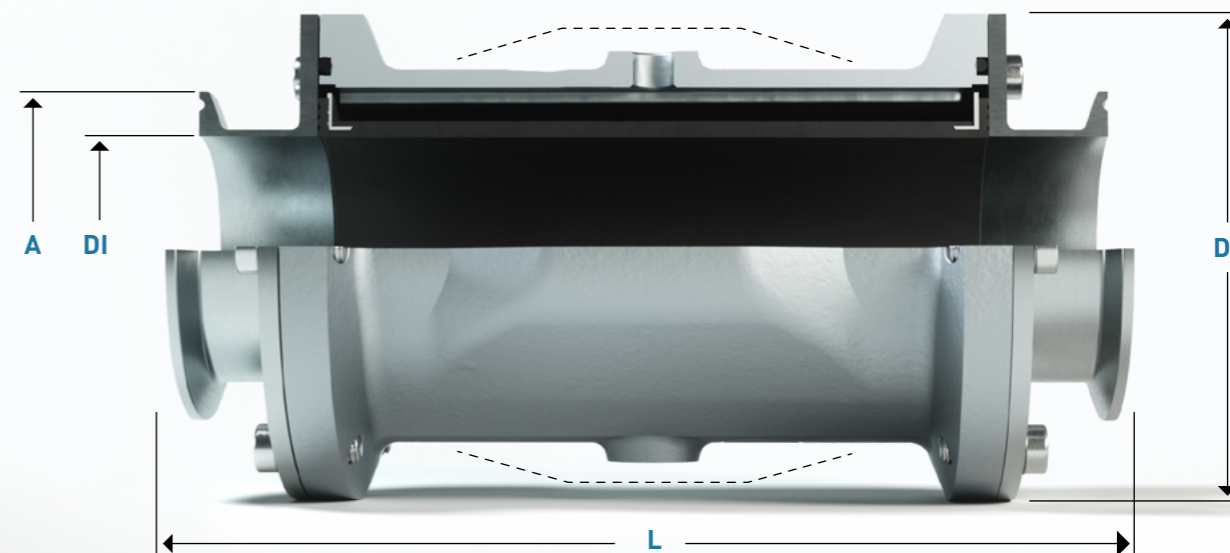


SERIES 48

Nominal widths: **2", 2½", 3", DIN 32676 Series A**
 Especially suitable for: **abrasive and delicate products**



Dimensions



DN	DI	A	L	Da	Vol. l'	kg
50	50 / 2"	64	216	112	0,22	2,70
65	65 / 2½"	91	250	134	0,49	3,40
80	80 / 3"	106	291	154	0,95	4,80

Vol. l' - Control volume for closed valve

Material specifications

Screws
Stainless steel A4

Tri-Clamp
Stainless steel 1.4404 (DIN 32676, series A)

Sleeve
as selected

O-Ring
nitrile rubber NBR

Housing (not in contact with medium)
aluminium casting G-Al Si 7 Mg, powder-coated silver grey

Special versions on request

Assembly videos, service instructions, spare parts, conformities etc. see: ho-matic.ch/downloads



Article number

Series	DN	Sleeve Quality							Version	
		NR	NR-L	NR-LH	NBR-LH	EPDM-L	FPM	CR	CSM	Standard
48	050.	001.	011.	021.	121.	211.	301.	401.	501.	000
	065.	ATEX-Versions:				NR-E	NR-LE	NBR-LE	EPDM-LE	ATEX
	080.					031.	061.	161.	261.	022

Example orders

Valve complete: 48065.211.000 | Sleeve: 4065.211.000 | Spare parts:

Control | Accessories

