



# SERIES 00

Nominal widths: **G 3/8", 1/2", 3/4", 1"**  
 Especially suitable for: **dosing of food & powder**



## Material specifications

**Screws**  
galvanized steel

**Threaded cover**  
POM plastic (polyoxymethylene), natural white

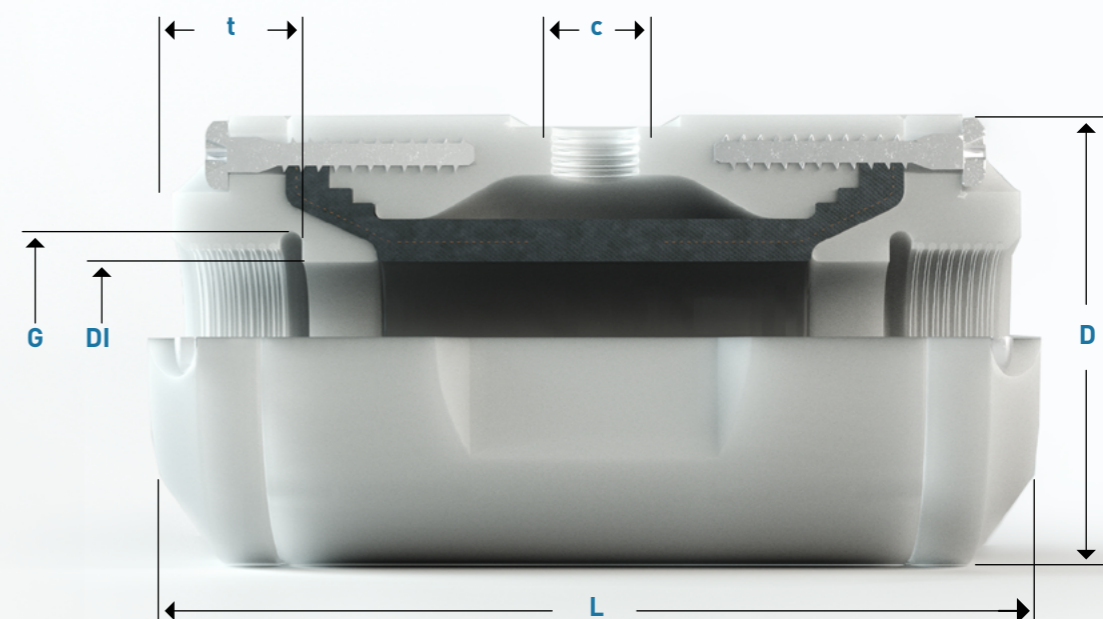
**Sleeve**  
as selected

**Housing** (not in contact with medium)  
POM plastic (polyoxymethylene), natural white

Special versions on request

Assembly videos, service instructions, spare parts, conformities etc. see: [ho-matic.ch/downloads](https://www.ho-matic.ch/downloads)

## Dimensions



DN	DI	G	t	D	L	c	Vol. l'	kg
10	10	G 3/8"	12	44	80	G 1/4"	0,03	0,14
15	15	G 1/2"	14	50	95	G 1/4"	0,04	0,20
20	20	G 3/4"	17	58	110	G 1/4"	0,05	0,30
25	25	G 1"	20	65	125	G 1/4"	0,07	0,40

Vol. l' - Control volume for closed valve

## Article number

Series	DN	Sleeve   Quality								Version
		NR	NR-L	NR-LH	NBR-LH	EPDM-L	FPM	CR	CSM	Standard
00	010.	001.	011.	021.	121.	212.	303.	401.	501.	000
	015.									
	020.									
	025.									

## Example orders

Valve complete: 00020.001.000 | Sleeve: 0020.001.000 | Spare part:

## Control | Accessories

