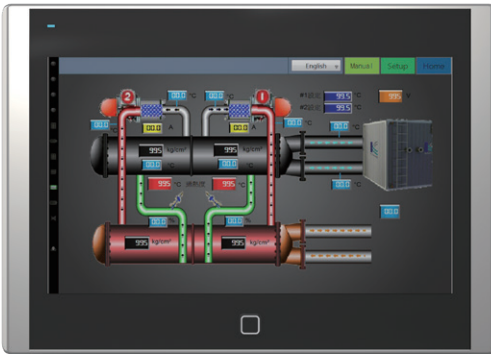


Industrial HMI Operator Panel P12

NOVAKON

P SERIES

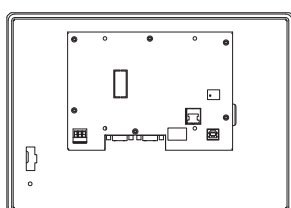
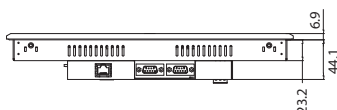
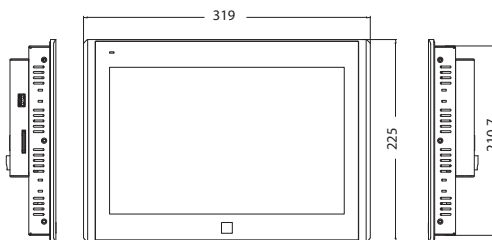
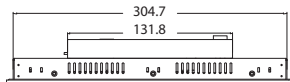
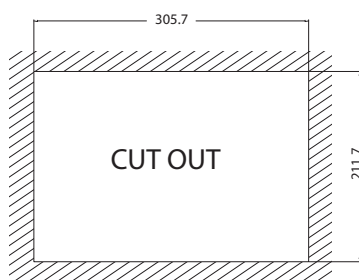


Features

- TI ARM® Cortex™-A8, Sitara™ AM3352 (1GHz)
- 12.1" TFT 1280 x 800, 450 cd/m², 50,000 hours
- 19.2 ~ 28.8V, Isolated Power
- Aluminum IP65 front bezel and steel chassis
- Panel or VESA 100 mm x 100 mm mount
- ESD Protection : Level 4 (Contact Discharge 8KV, Air-Gap Discharge 15KV), Class A
- Suitable for industrial applications

Specifications

CPU	TI ARM® Cortex™-A8, Sitara™ AM3352 (1GHz)
Memory	512MB SDRAM
Storage	4GB eMMC
I/O	1 x USB 2.0 host Type A 1 x USB 2.0 device Type B 2 x RS232/422/485, COM1, COM2 1 x RS232/485, COM3 or CAN Bus (Option) 1 x 10/100 Mbit Ethernet Port or 2 x 10/100 Mbit (Option) 1 x SD Card Slot
Display	12.1" TFT, 1280 x 800 Luminance 450 (cd/m ²) View angle 170/170 (H°/V°) Backlight Lifetime 50,000 hours Contrast ratio 1000:1
Touch Screen	5-wire resistive touch
Power	19.2 ~ 28.8V Isolated Power
Construction	Aluminum IP65 front bezel and steel rear chassis
Net Weight(Kgs)	4.3 Kg
Mounting	Panel or VESA 100 x 100 mount
Dimensions (mm)	319.0(W) x 225.0(H) x 50.6(D)
Operating Temp.	0°C~ 50°C
Storage Temp.	-20°C ~ 60°C
Humidity	10% to 90% @ 40°C, (non-condensing)
ESD Protection	Level 4 (Contact Discharge 8KV, Air-Gap Discharge 15KV), Class A
Certification	CE/FCC (EN 61000-6-4, EN 61000-6-2)



Ordering Information

P12F-N

12.1" TFT 1280 x 800 fan-less HMI with ARM Cortex-A8 (1GHz) CPU, 512MB RAM, 4GB eMMC, resistive touch screen, Ethernet, 19.2 ~ 28.8V isolated power, aluminum front bezel, steel rear chassis