

Industrial Panel PC ST15/ST19

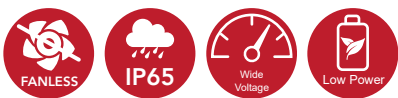
NOVAKON
ST SERIES



Intel® Atom™ Processor E3845 Stainless Steel Panel PC HMI / SCADA

Features

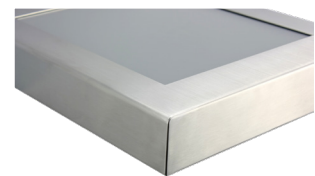
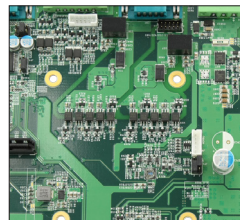
- Fanless design, Resistive touch
- Durable stainless steel housing
- Full IP65 protection
- Low power consumption processor
- Wide-range 10V~30V DC power input
- Suitable for Food Processing, Livestock, Petro, and washing Industries HMI / SCADA applications with iFACE Designer® Runtime



I/O View



- M12 I/O port



- USB 3.0

IP56 AC to DC 90W Stainless Steel Power Adaptor



Edge I/O

M23 connector AC input

4-pin M12 connector DC output (4-pin definition: +/-/G/earth ground)

Power

Power Supply 90V ~ 240V AC input
24V DC output @ 3.75mA

Construction

Chassis 304 stainless steel / 316 stainless steel for Optional

Mounting Wall mount

Protection Class Full IP56 protection

Environmental

Temperature Operating: 0°C~ 50°C (Max. 80W at 50°C)
Storage: -40°C~85°C

Humidity 10%~90% (non-condensing)

Regulation RoHS

Certification CE/FCC class A

Accessories

- Wall mount kits
- 1x power cable M23/3P L=5m
- 1x power cable M12 4P L=2m
- Power connector for U.S. regulation (Optional)
- Power connector for EU regulation (Optional)
- Power connector for Australian regulatory (Optional)

Industrial Panel PC ST15/ST19

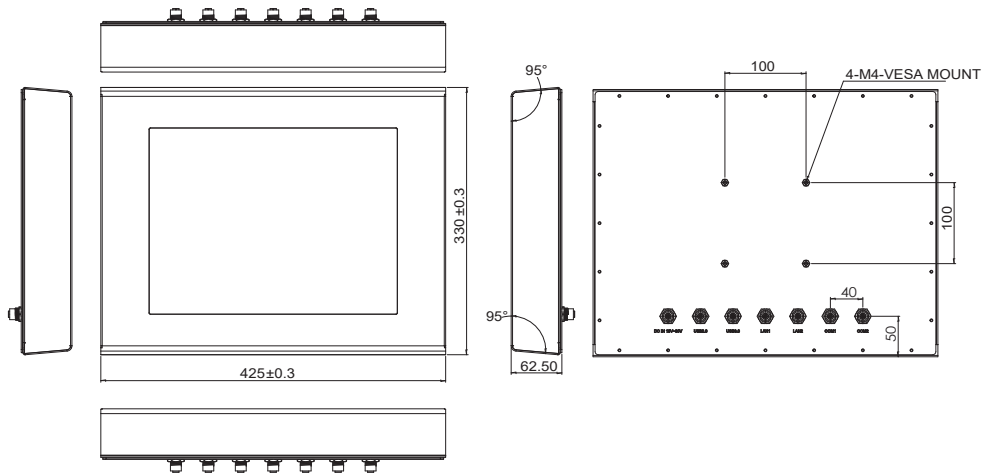
NOVAKON
ST SERIES

Model No.		ST15	ST19	
Display & Touch Screen	Display Size	15" TFT-LCD	19" TFT-LCD	
	Max. Resolution	1024 x 768	1280 x 1024	
	Luminance (cd/m ²)	500	350	
	Contrast	800 : 1	1000 : 1	
	Max. Color	16.2M	16.7M	
	View Angle (H°/V°)	160/160	170/160	
	Backlight Lifetime(hrs)	50,000		
	Touch Type	Resistive		
	Touch Interface	USB		
	Light Transmission (%)	80		
	Point of touch	1		
I/O Interface	USB 3.0	1 (M12)		
	USB 2.0	1 (M12)		
	RS-232/422/485 Selectable in BIOS	1 (M12)		
	RS-232	1 (M12)		
	LAN	2x GbE (M12)		
	Additional Graphics	None		
	Audio	None		
	Digital I/O	None		
	Power Connector	M12 connector		
	Power Button	None		
System	Processor	Intel® Atom™ Processor E3845 1.91GHz		
	Memory	2x DDR3L SO-DIMM, up to 8GB, default 4GB		
	Thermal Design	Fanless		
	Membrane Control	None		
	Built-in Speaker/MIC	None		
Expansion	Internal Expansion Bus	1x Mini PCI-E(x1) [full/half-size] 1x Mini PCI-E(x1) [half-size]		
	Expansion Slot	None		
	Wireless	None		
Storage Space	HDD	1x 2.5" SATA		
	Removable	None		
Power	Power Input Range	10V~30V DC		
Construction	Chassis Material	304 stainless steel / 316 stainless steel as Optional		
	Color (Front/Back)	Silver / Silver		
	IP Rating	IP65 / IP69K		
	Mounting (mm)	VESA 75x75 and 100x100		
	Dimensions (mm)	425 x 330 x 62.5	470 x 390 x 62.5	
	Net Weight (kgs)	13.5	17	
Environmental	Operating Temperature	0°C ~ 50°C		
	Storage Temperature	-20°C ~ 60°C		
	Storage Humidity	10%~90% (non-condensing)		
	Certification	CE/FCC class B and LVD		
	Software	iFace Designer® (Optional)		
	Operating Systems	Windows 10/ Windows 8 32-bit/64-bit, Windows 7 Pro for Embedded 64-bit, WES7 64-bit		

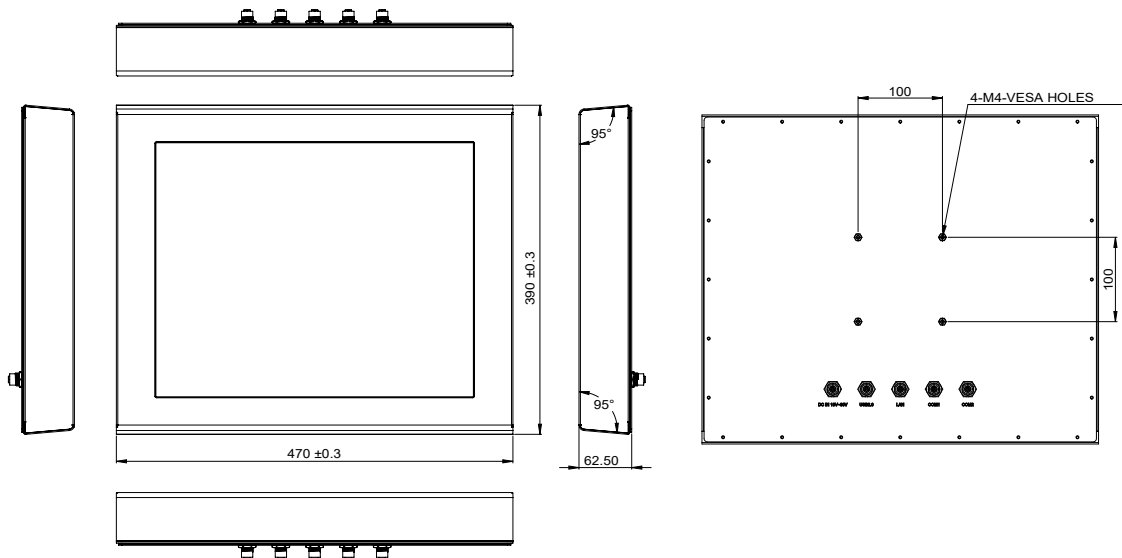
Industrial Panel PC ST15/ST19

NOVAKON
ST SERIES

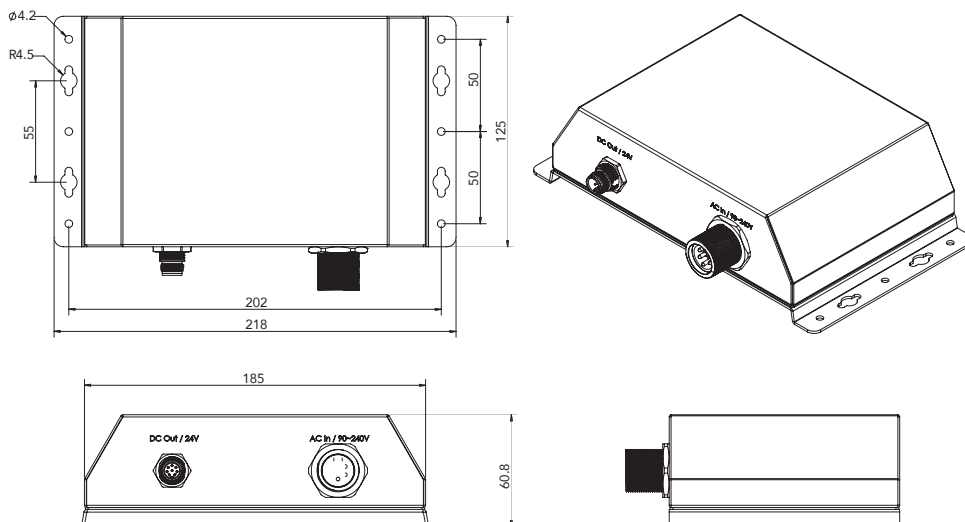
ST15



ST19



IP56 Power Adapter



Industrial Panel PC ST15/ST19

NOVAKON
ST SERIES

Ordering Information

ST15	15" (1024 x 768) Stainless Steel Panel PC with Intel® Atom™ Processor E3845 1.91GHz, 4GB DDR3L SO-DIMM, 64G SSD, resistive touch
ST15-i	15" (1024 x 768) Stainless Steel Panel PC with Intel® Atom™ Processor E3845 1.91GHz, 4GB DDR3L SO-DIMM, 64G SSD, resistive touch, Ubuntu OS, iFace Designer® HMI Software Runtime License
ST19	19" (1280 x 1024) Stainless Steel Panel PC with Intel® Atom™ Processor E3845 1.91GHz, 4GB DDR3L SO-DIMM, 64G SSD, resistive touch
ST19-i	19" (1280 x 1024) Stainless Steel Panel PC with Intel® Atom™ Processor E3845 1.91GHz, 4GB DDR3L SO-DIMM, 64G SSD, resistive touch, Ubuntu OS, iFace Designer® HMI Software Runtime License
M12-PWR-Cable (Optional)	200cm M12 Power to terminal block cable
M12-USB2-Cable (Optional)	300cm M12 to USB2.0 type A port
M12-USB3-Cable (Optional)	250CM M12 to USB3.0 type A port
M12-RJ45-Cable (Optional)	300CM M12 to RJ45 jack cable
M12-COM-Cable (Optional)	200cmM M12 to one RS232 DSUB9 cable
IP56 Power Adapter (Optional)	24VDC out , 90~240VAC input, OP 50°C with 80W, stainless steel housing, total IP56 power supply
Power adapter (Optional)	90~240VAC input, 12V DC output, 84W adaptor with terminal block connector