

# iFace-Designer®

---

## SCADA Quick Guide

*August 2021*

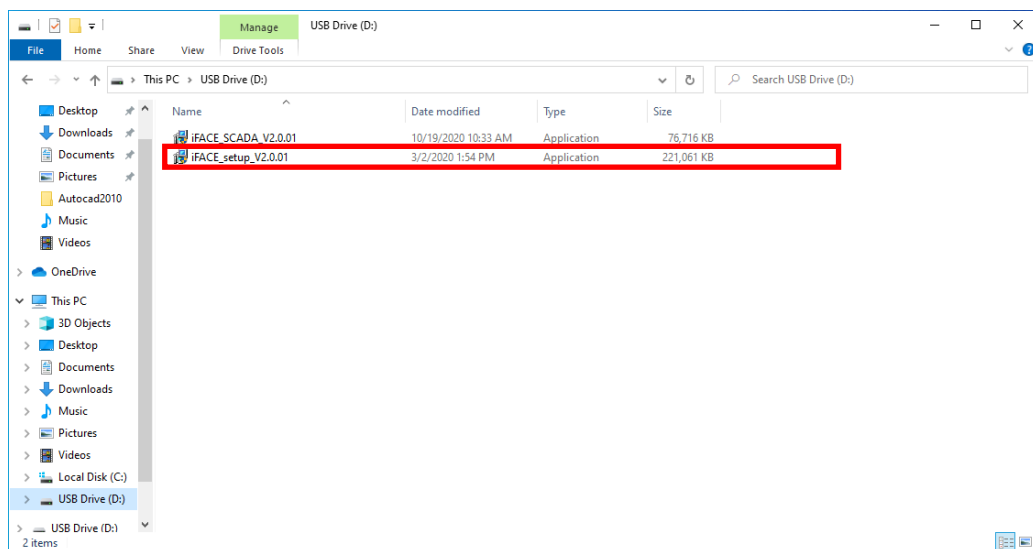
*Version 1.02*

iFace SCADA® is derived from iFace-Designer® runtime to be executed on X86 PC/IPC hardware platform for supervisory control and data acquisition applications. This chapter will introduce the procedures of software download, installation, and program execution. For iFace-Designer project setups and programming, please refer to [iFace Designer User Manual.pdf](#).

## A. Installation of iFace-Designer®

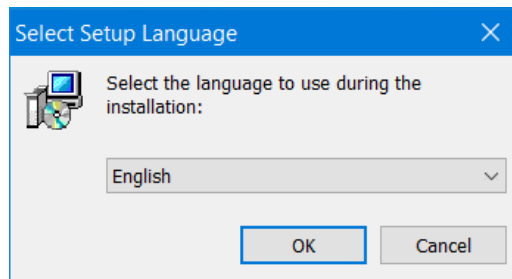


1. After downloading iFace-Designer from Novakon official website. Double-click on **【iFace\_setupV2.0.01.exe】** to start the installation process. (V2.0.01 is the version used in this example, it may differ according to your need)

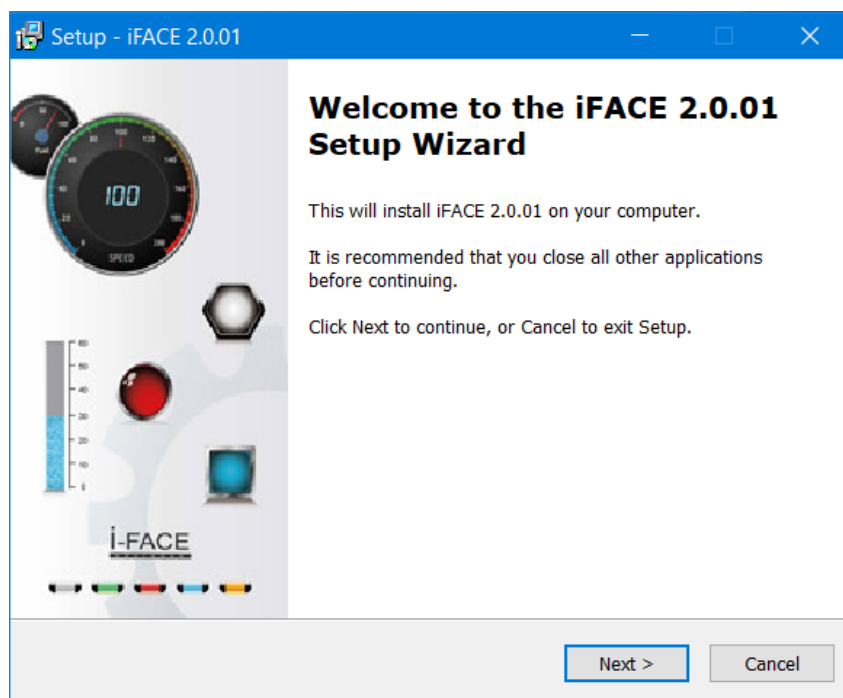


2. Select the setup language and press **【OK】** .

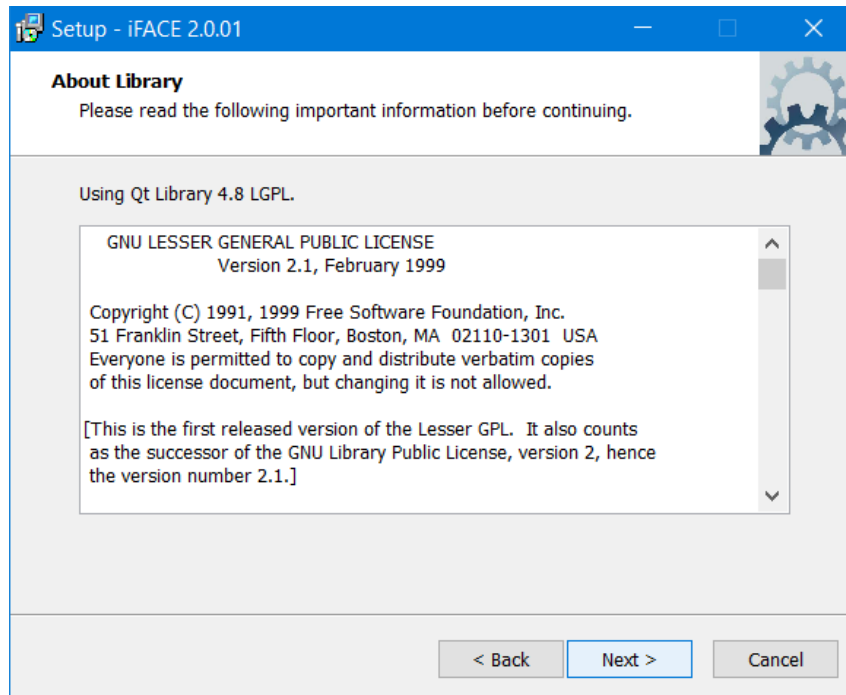
Note: the language selected here is only applied to setup procedures, not related to the user interface language in iFace Designer.



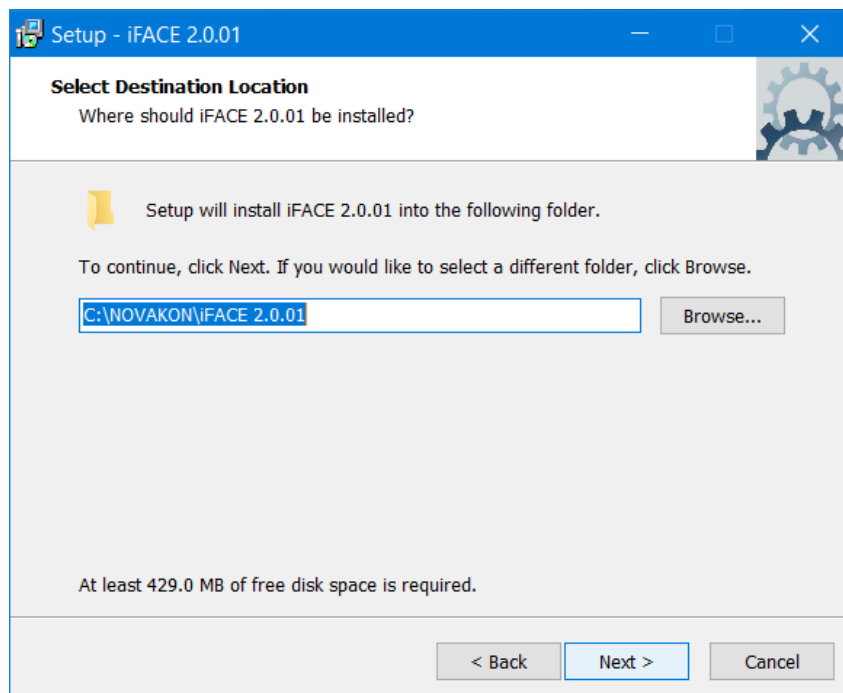
3. Click **【Next】** to start the installation



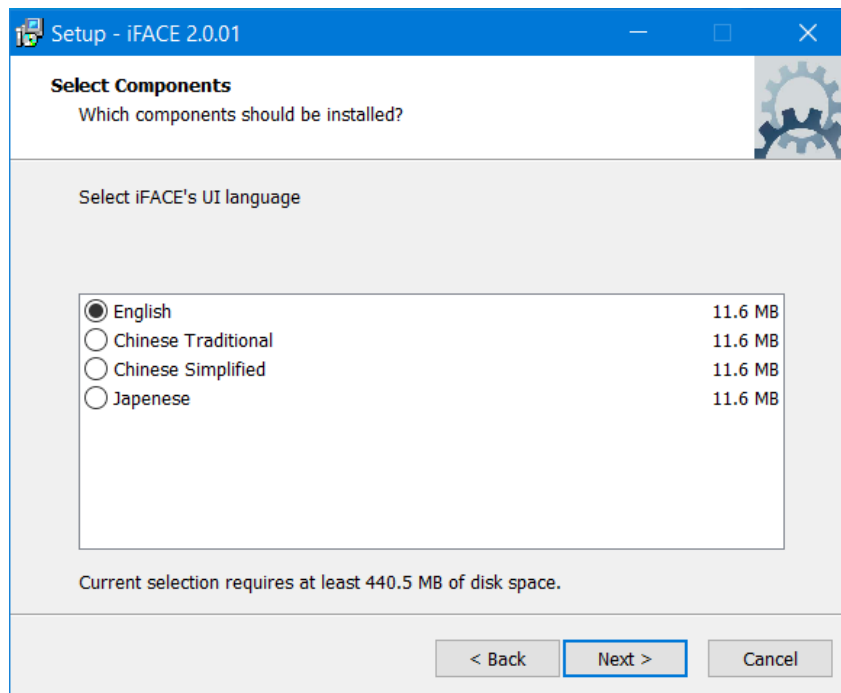
4. Click **【Next】** to continue



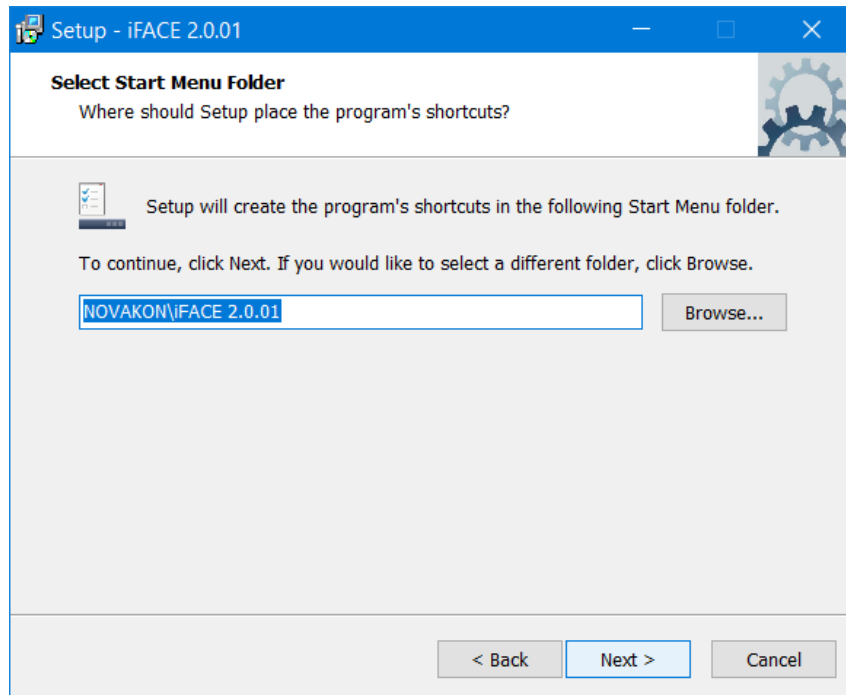
5. Select destination location for the installation. To change the location, click **【Browse】** to select and click **【Next】** .



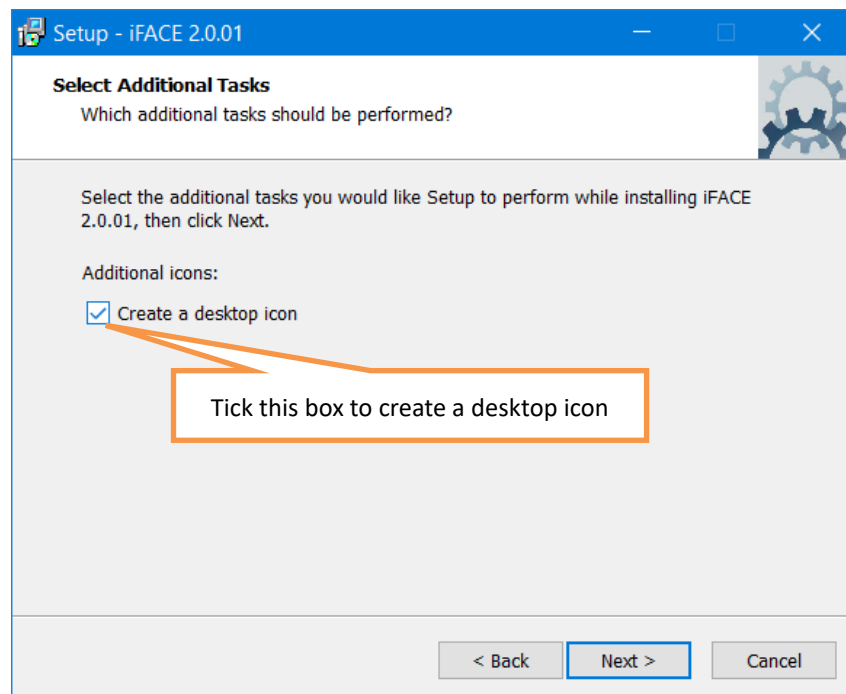
6. Select iFace's UI language and click **【Next】**



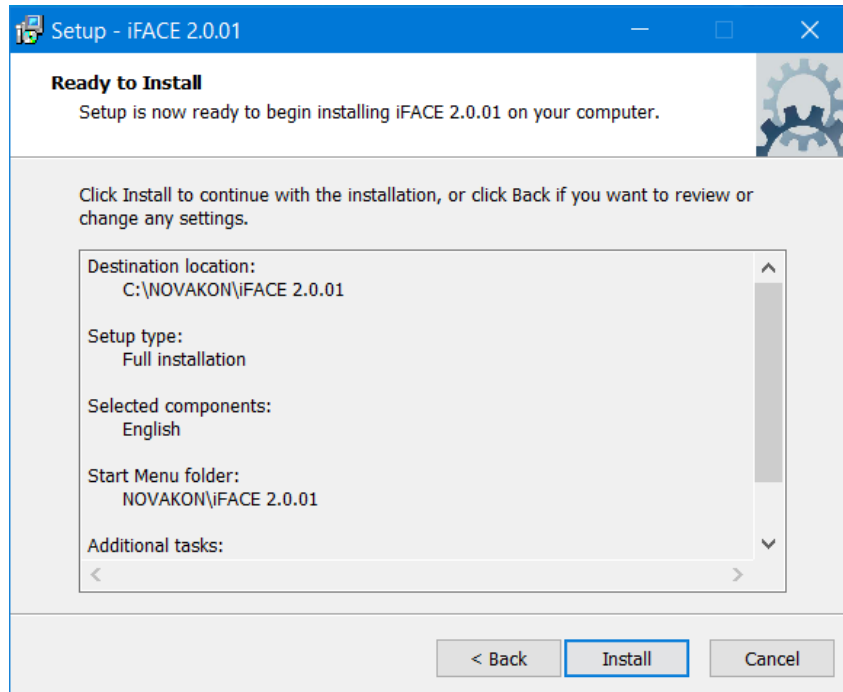
7. Select location for program's shortcut in **【Start Menu】** folder. To change the location, click **【Browse】** to select and click **【Next】** .



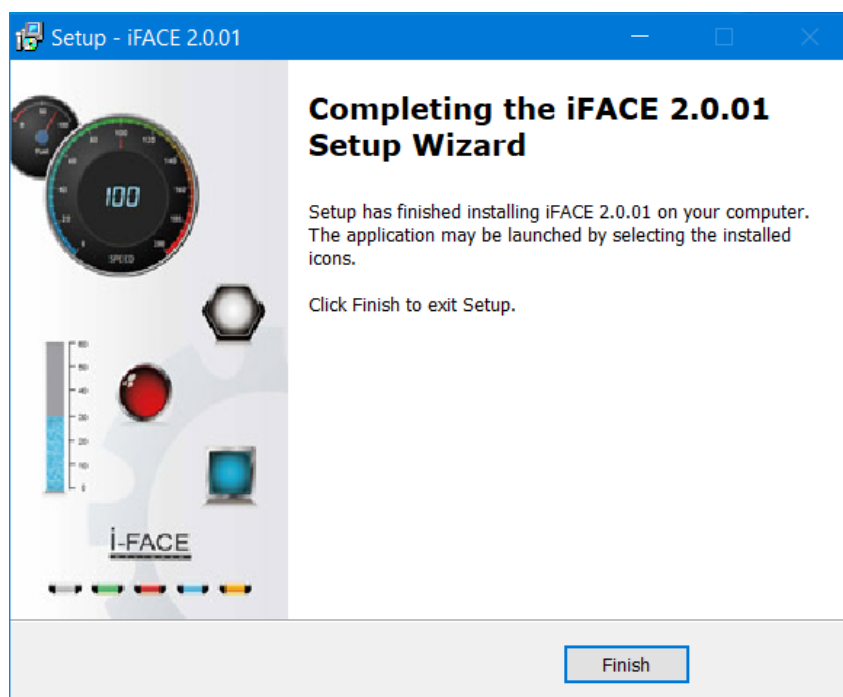
8. Tick the box if you want to create a desktop icon. Click **Next** to continue.



9. Check if all the settings are correct. Click **【 Back 】** for adjustment; Click **【 Install 】** to continue the installation.

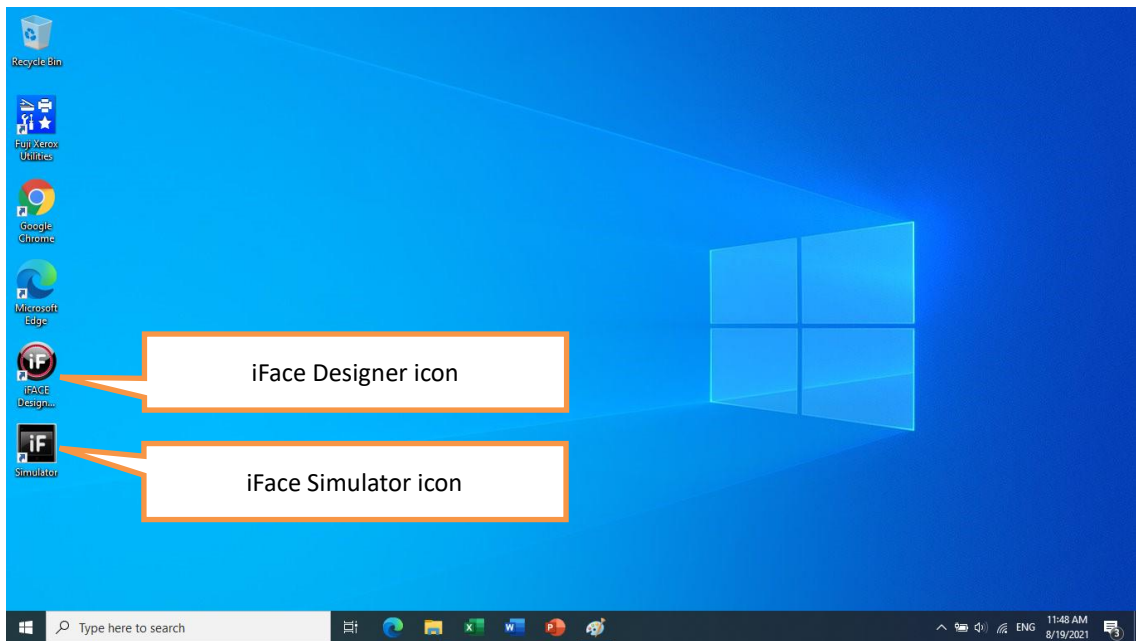


10. Completing the setup wizard. Click **【 Finish 】** to close the wizard.

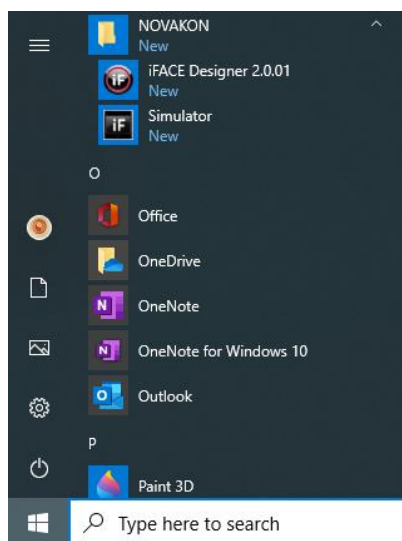


11. The icons of 【iFace Designer 2.0.1】 and 【Simulator】 are on the desktop now.

Double-Click 【iFaceDesigner 2.0.1】 to run the iFace Designer 2.0.1 editor for project programming; Double-Click 【Simulator】 for project simulation. 【Simulator】 here serves the same function as 【Online Simulation】 in iFace Designer 2.0.1 editor.




12. If the desktop icons are not found, they can also be found at Novakon folder in 【Start Menu】 .

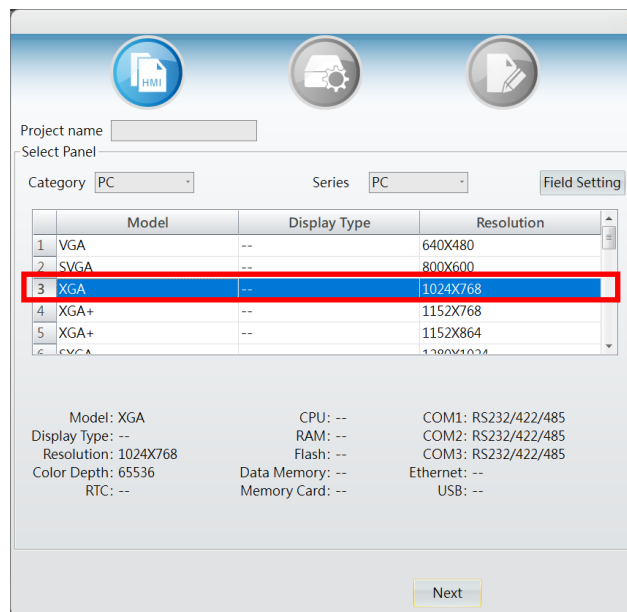




## B. Create a New Project



In **iFace Designer**, create a new project by clicking the icon  on the upper-left corner. Select **PC** in the **Category**, **Model** depends on the resolution of the monitor this program to be run with. In this example, we select **XGA** (Resolution 1204 x 768).

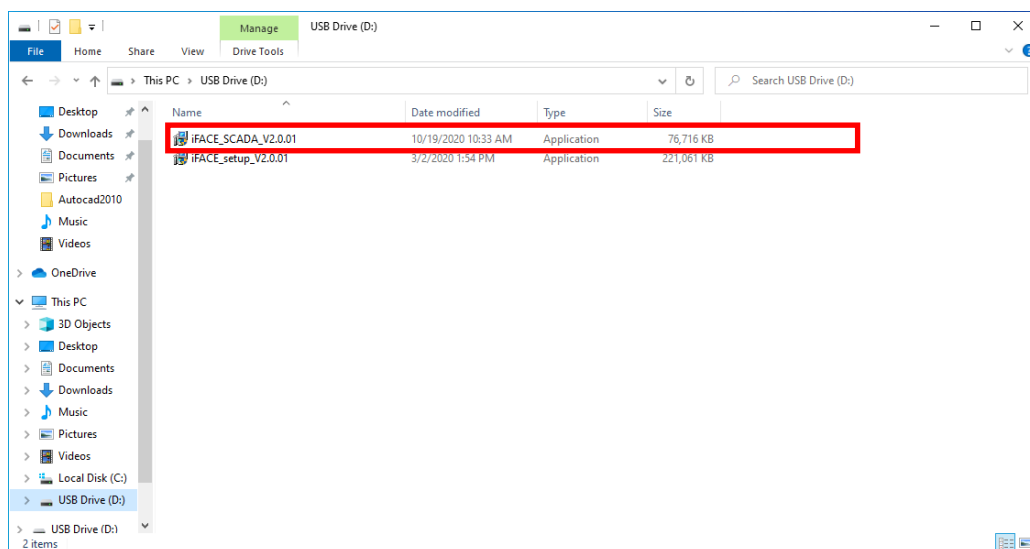


For iFace-Designer project setups and programming, please refer to [iFace Designer User Manual.pdf](#).

## C. Installation of iFace SCADA

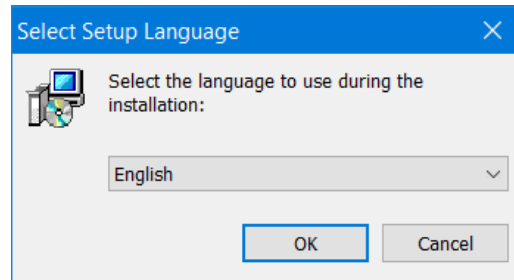


1. Double-click on **[ iFace\_SCADA\_V2.0.01.exe ]** to start the installation process. (V2.0.01 is the version used in this example, it may differ according to your need)



2. Select the setup language and press **[ OK ]** .

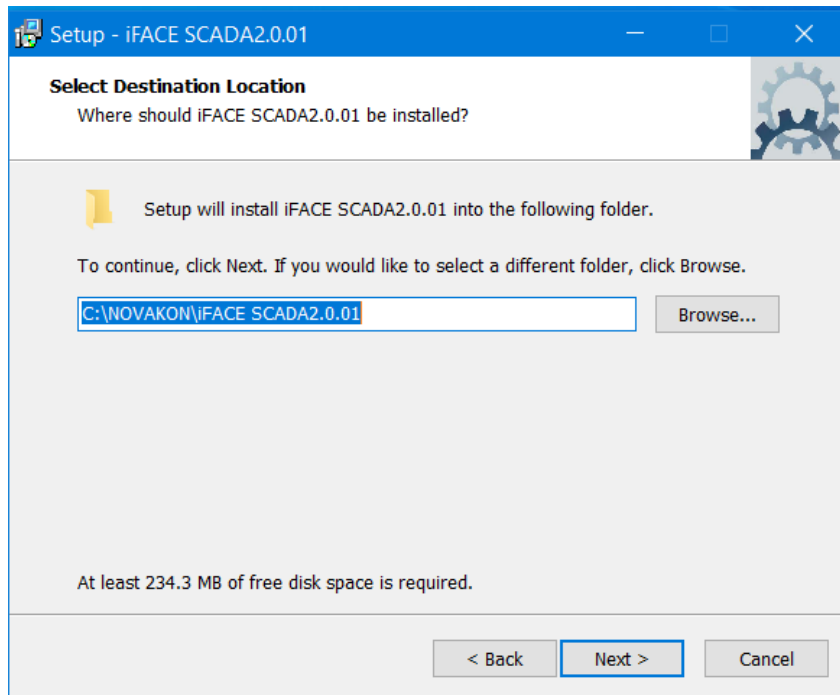
Note: the language selected here is only applied to setup procedures, not related to the user interface language in iFace Designer.



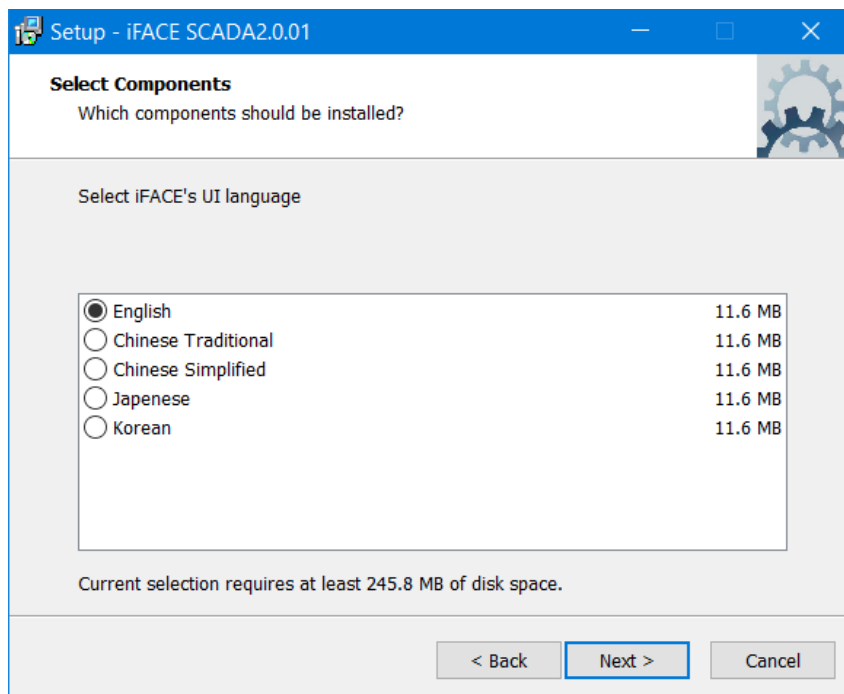
3. Click **Next** to start the installation



4. Select destination location for the installation. To change the location, click **Browse** to select and click **Next** .

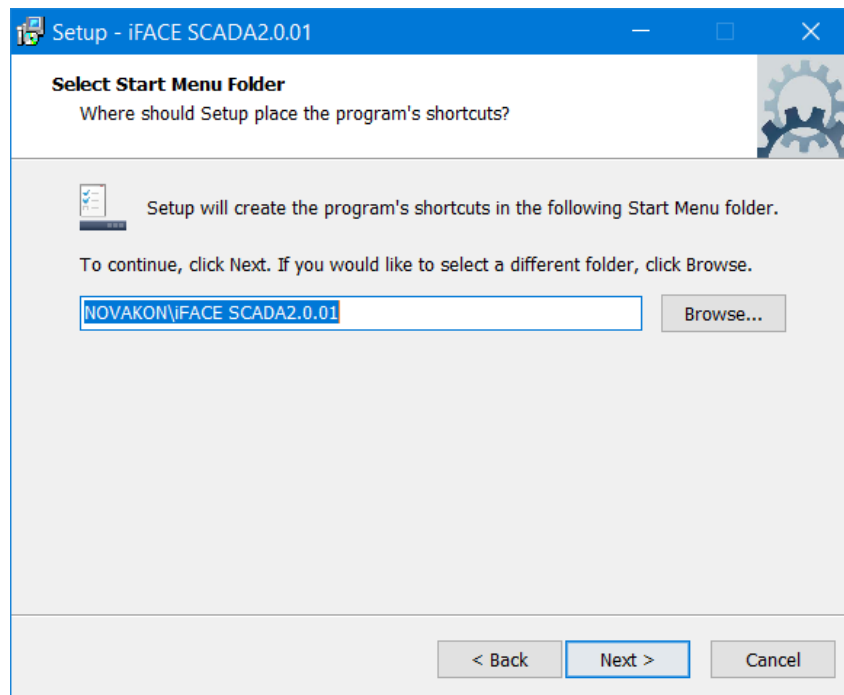


5. Select iFace SCADA's UI language and click **Next** .

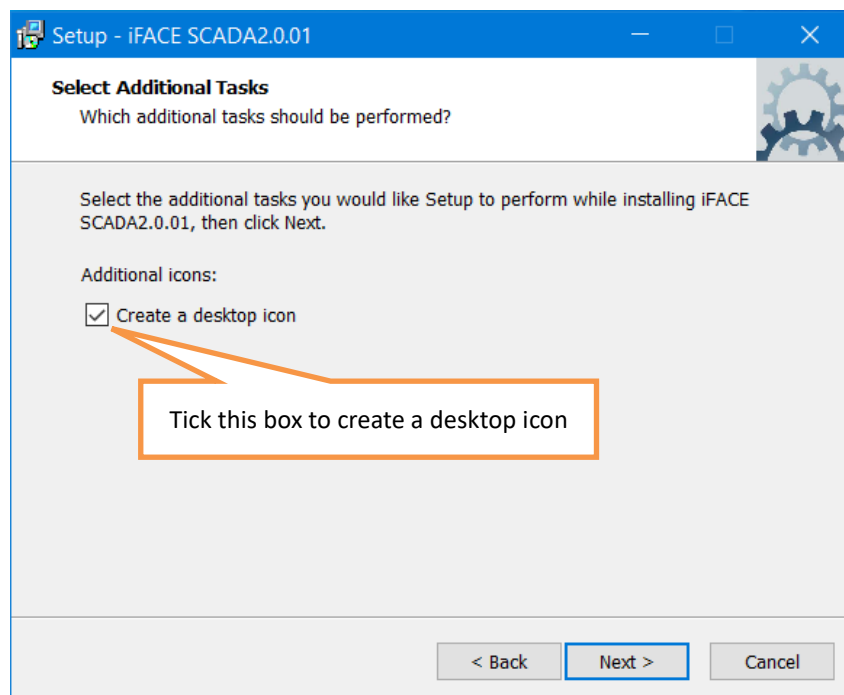


6. Select location for program's shortcut in **Start Menu** folder. To change the location,

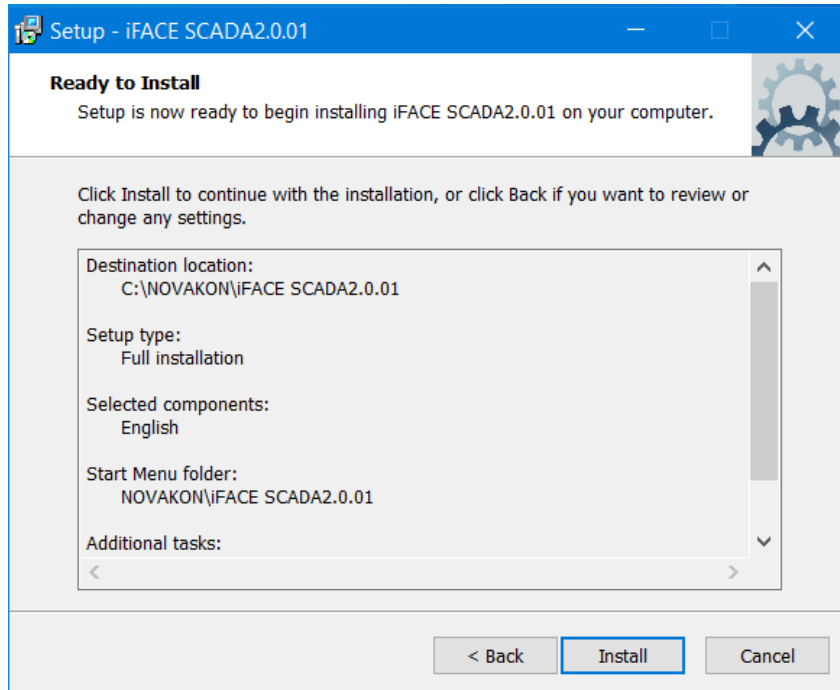
click **【Browse】** to select and click **【Next】** .



7. Tick the box if you want to create a desktop icon. Click **【Next】** to continue. °



- Check if all the settings are correct. Click **【 Back 】** for adjustment; Click **【 Install 】** to continue the installation.

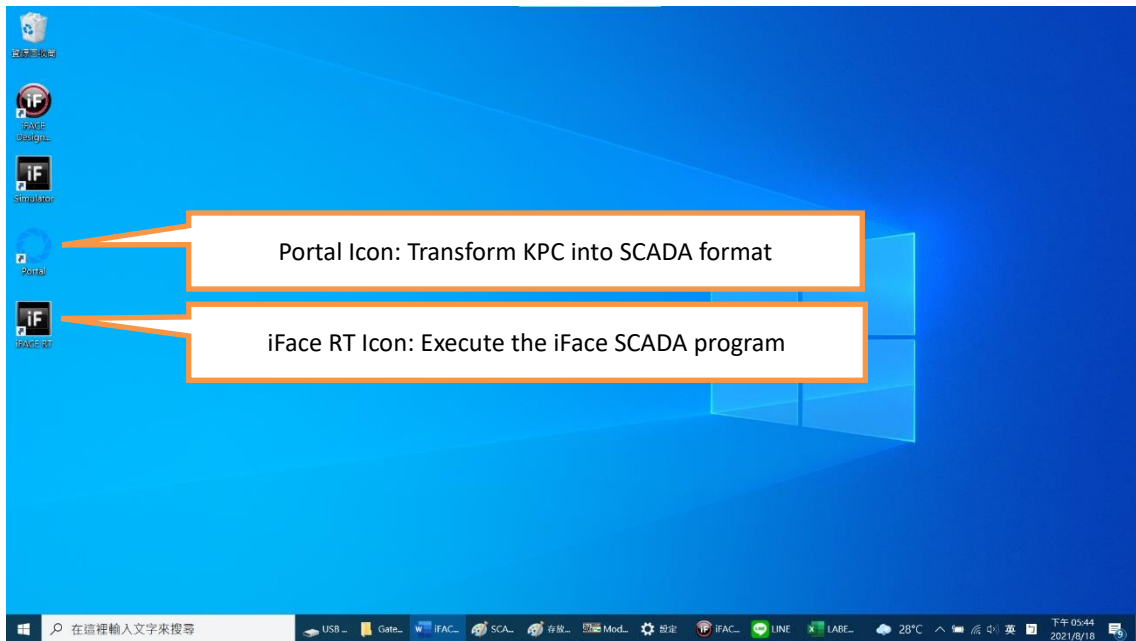


- Completing the setup wizard. Click **【 Finish 】** to close the wizard.

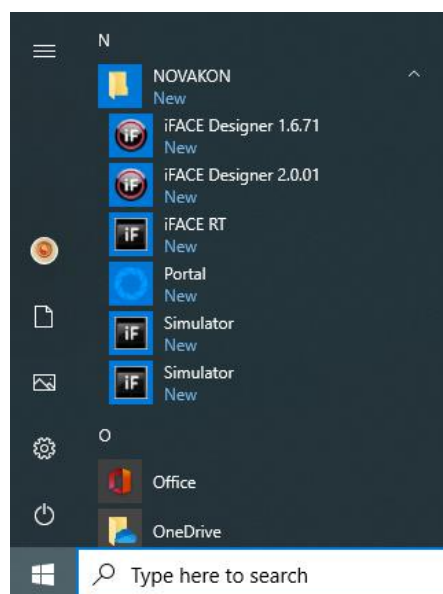


10. The icons of 【Portal】 and 【iFace RT】 are on the desktop now.

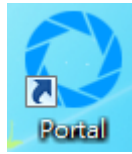
【Portal】 transform the compiled\*.kpc into SCADA format; 【iFace RT】 execute the SCADA program.



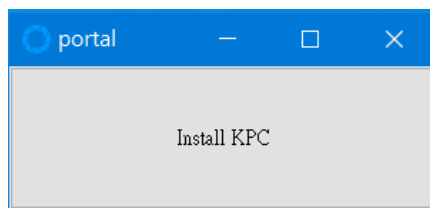
11. If the desktop icons are not found, they can also be found at Novakon folder in 【Start Menu】 .



12. Double-click on **【Portal】** icon to transform the compiled\*.kpc into SCADA format.



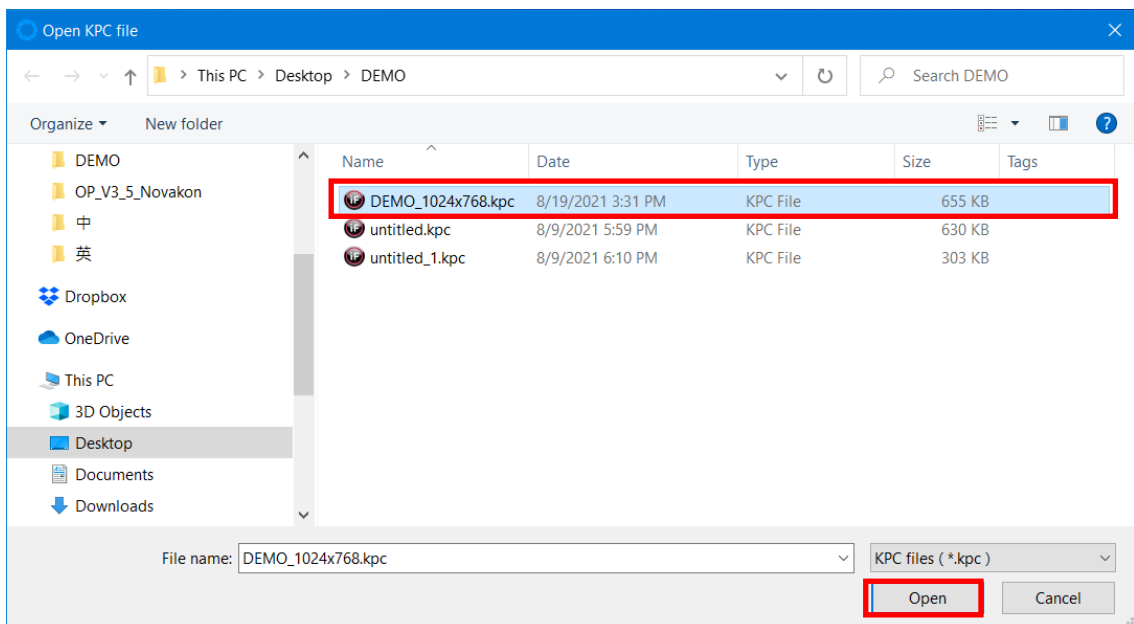
13. Click **【Install KPC】** .



Locate and select the\*.kpc file to be transformed. In this example,

**【Demo\_1024x768.kpc】** is selected, and click **【Open】** . After the transformation, the

**【Portal】** dialog can be closed.





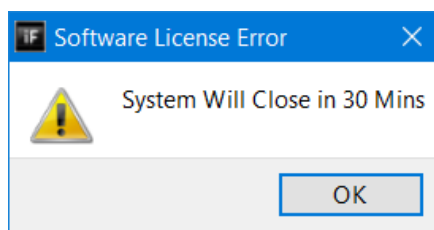
14. Double-click on 【iFace RT】 icon to execute the SCADA program.



15. SCADA program is now running



16. Remember to plug in the iFace SCADA USB Dongle KEY to the USB port of your PC before executing the SCADA program. Otherwise a reminder will pop up showing 【System Will Close in 30 Mins】 .



## Appendix : Font installation

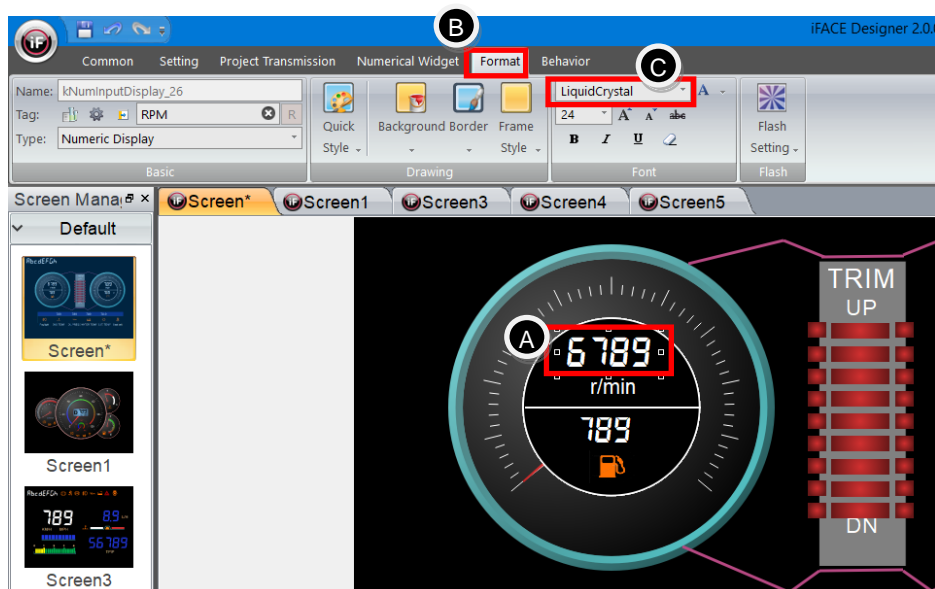


Occasionally the font displayed in the SCADA program is not the same as that in the editor. This might be resulted from missing fonts in the SCADA program, which is run on a different PC rather than the one for project editing.

### 1. Check the font selected in the editor

In iFace Designer, you can check the font setting in Ribbon UI **【Format】** → **【Font】** .

Follow the steps below to check the which font was originally used.



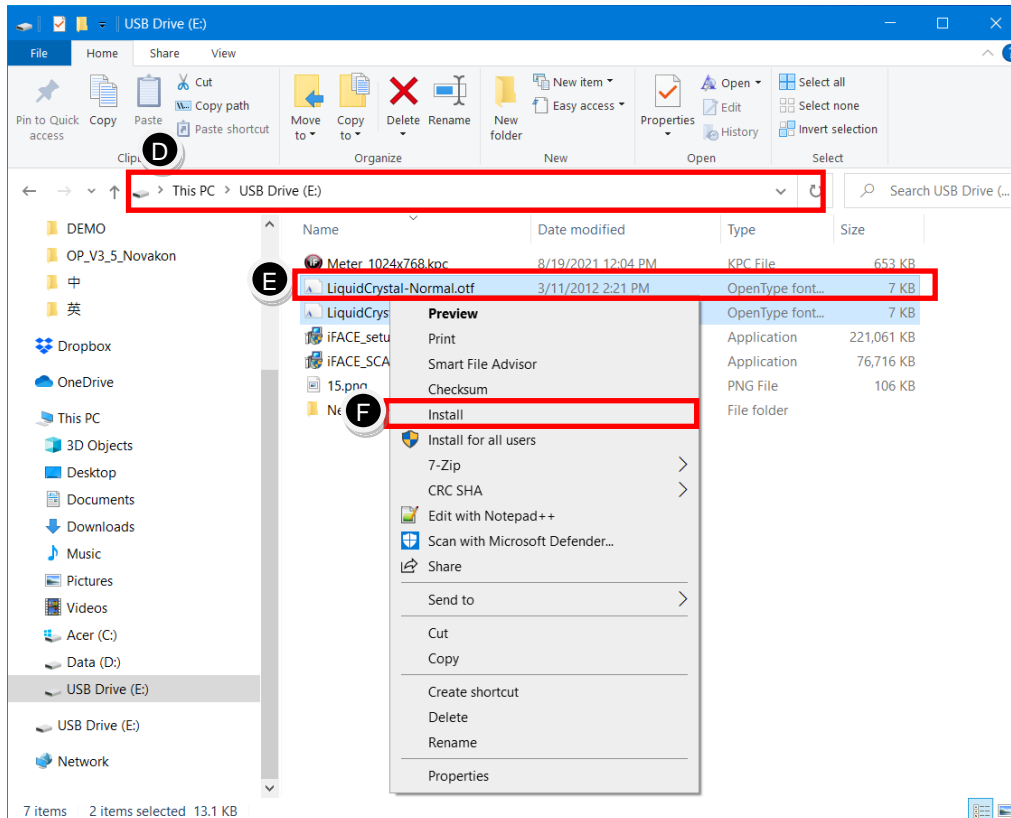
A. Click on the numerical display widget

B. Click on Ribbon UI → **【Format】**

C. The font selected is **【LiquidCrystal】**

## 2. Adding fonts in Windows

Now obtained the font file of **【LiquidCrystal】** and install it in Windows:



D. Locate the font file

E. Right-click on the font file

F. Click on **【Install】** on the pop up menu and wait until the process completes.

## 3. Execute the **【iFace RT】** again

After the font installation, it will be applied to the **【iFace RT】** to have identical font style as viewed in iFace editor.