

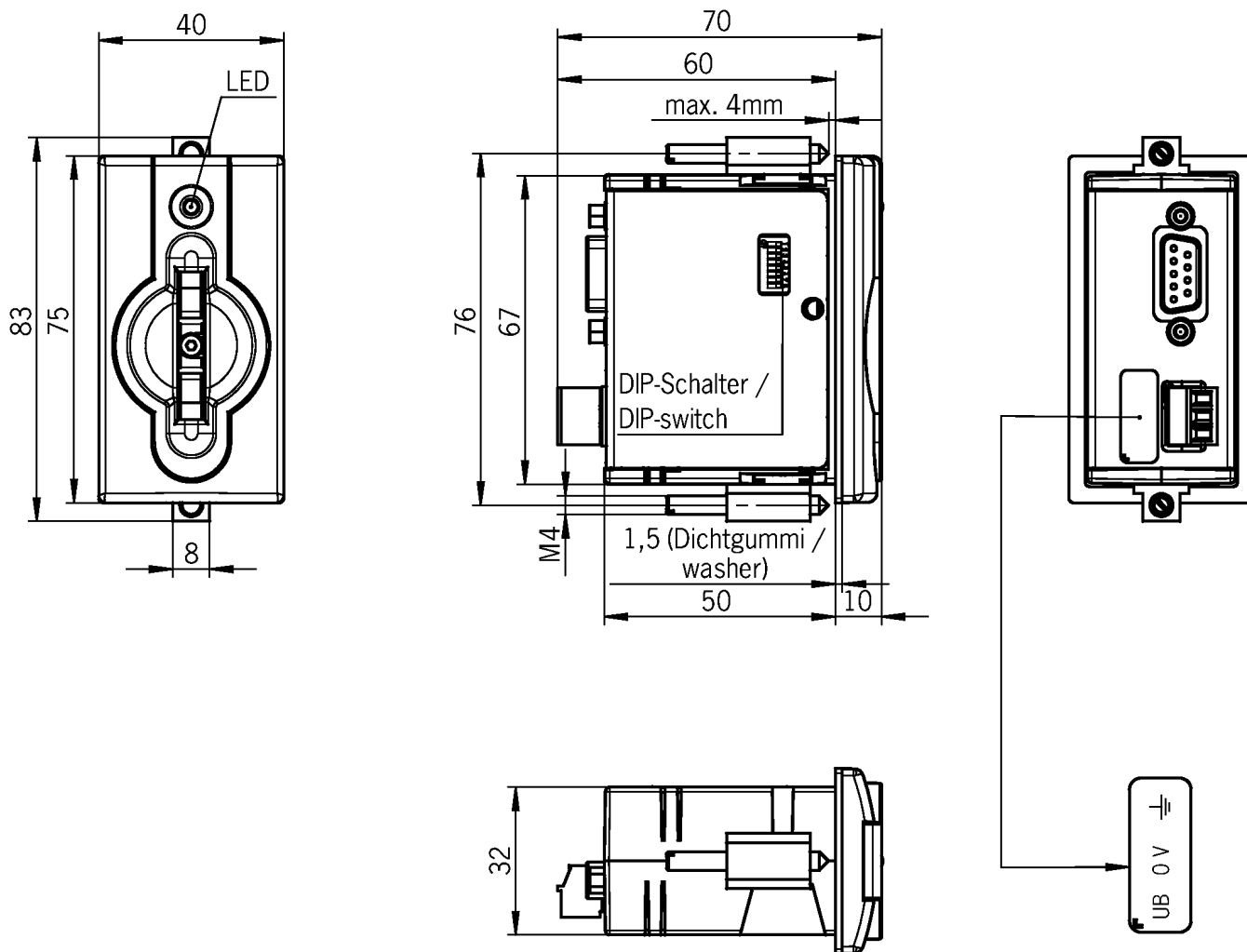
EKS-A-IDX-G01-ST09/03 (Order no. 084800)

Electronic-Key adapter with PROFIBUS DP interface

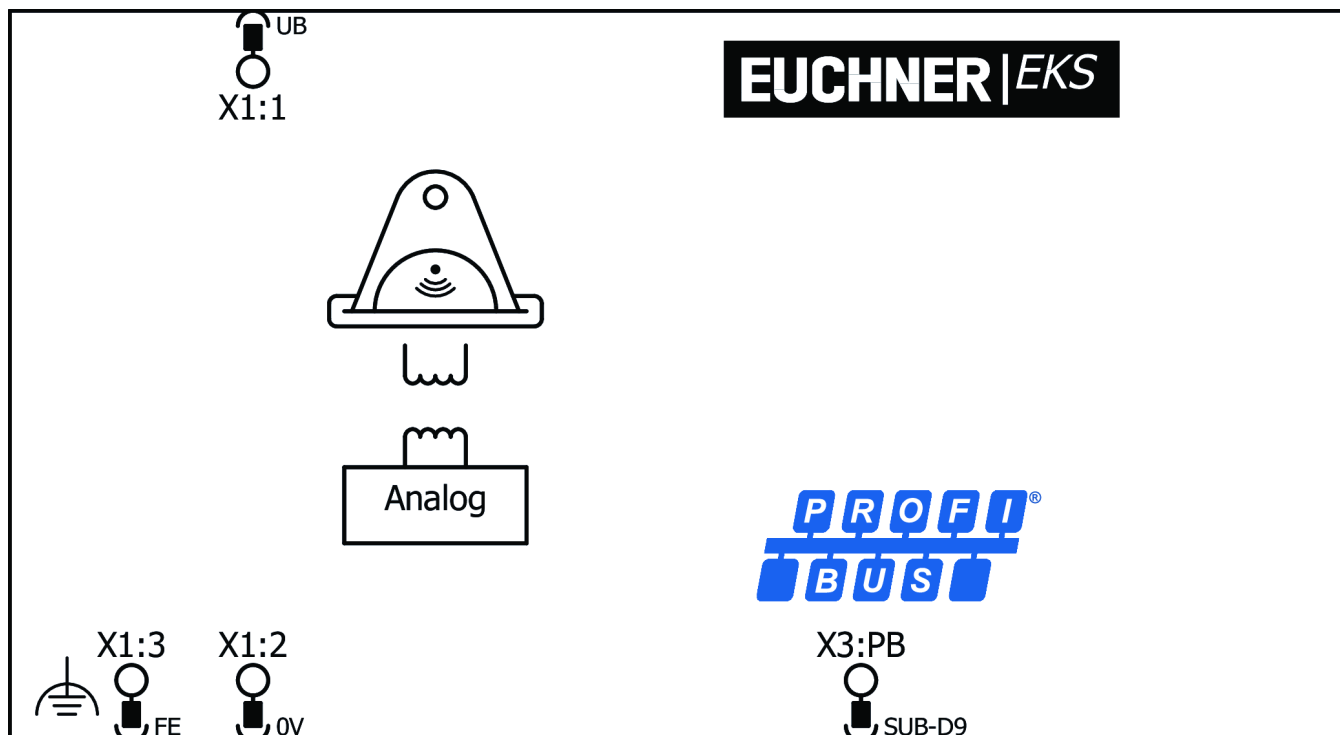
- ▶ Electronic-Key adapter with PROFIBUS DP interface in housing G01
- ▶ Read/write system
- ▶ Remote mounting
- ▶ Electronic-Key adapter and electronics in one housing
- ▶ Transfers the data from the Electronic-Key to a control system for processing
- ▶ Connection to PLC
- ▶ PROFIBUS protocol, cyclic data transfer to control system
- ▶ Interfacing via GSD file
- ▶ Address assignment via DIP switches
- ▶ Very reliable retention of the Electronic-Key, even if there is heavy vibration
- ▶ Degree of protection: IP65/IP67 (installed)
- ▶ LED indicator



Dimensional drawings



Connection examples



Technical data

Approvals



Operating and display elements

LED display

- yellow Key in actuating range
- red Error
- green operational

Electrical connection values

Power supply	
Operating voltage DC	20 ... 24 ... 28 V DC
Current consumption	max. 150 mA

Mechanical values and environment

Installation orientation	on the front
Mounting cut-out	33 x 68 mm
Degree of protection	
in mounted condition (only access side)	IP67
Ambient temperature	0 ... 55 °C
Material	
Housing	PA6-GF30, gray

PROFIBUS DP

Connection type	D-Sub, 9-pin, socket
-----------------	----------------------

Interface

PROFIBUS DP	
Data protocol	Profibus DP according to EN50170

Downloads

All documentation for this material can be found on our website:

<https://www.euchner.de/en-us/a/084800/?#downloads-tab>

Ordering data

Ordernumber	084800
Item designation	EKS-A-IDX-G01-ST09/03
Gross weight	0,183kg
Global Trade Item Number (GTIN)	4047048007147
Customs tariff number	85365019000
ECLASS	27-39-90-90 Property, access monitor (other, unspecified)

Accessories

EKS Data Service

EKS Data Service (optional software expansion)



8163316

SW EKS DATA SERVICE

- ▶ Central software for providing access rights and access data from the PC into the PLC environment
- ▶ Simple online disabling of Electronic-Keys
- ▶ Central assignment or modification of access rights
- ▶ Emergency strategy in case of network fault
- ▶ Access event recording in server PC
- ▶ NOTICE: This can be used only in combination with the single-user or full version of our Electronic-Key-Manager EKM

Electronic-Key

Electronic-Key read/write



077859

EKS-A-K1RDWT32-EU

- ▶ Memory 116 bytes E²PROM (programmable) plus 8 bytes ROM (serial number)



084735

EKS-A-K1BKWT32-EU

- ▶ Memory 116 bytes E²PROM (programmable) plus 8 bytes ROM (serial number)



091045

EKS-A-K1BUWT32-EU

- ▶ Memory 116 bytes E²PROM (programmable) plus 8 bytes ROM (serial number)



094839

EKS-A-K1GNWT32-EU

- ▶ Memory 116 bytes E²PROM (programmable) plus 8 bytes ROM (serial number)



094840

EKS-A-K1YEWT32-EU

- ▶ Memory 116 bytes E²PROM (programmable) plus 8 bytes ROM (serial number)



123097

EKS-A-K1WHWT32-EU

- ▶ Memory 116 bytes E²PROM (programmable) plus 8 bytes ROM (serial number)



123098

EKS-A-K1OGWT32-EU

- ▶ Memory 116 bytes E²PROM (programmable) plus 8 bytes ROM (serial number)