

## tip

## sipariş no

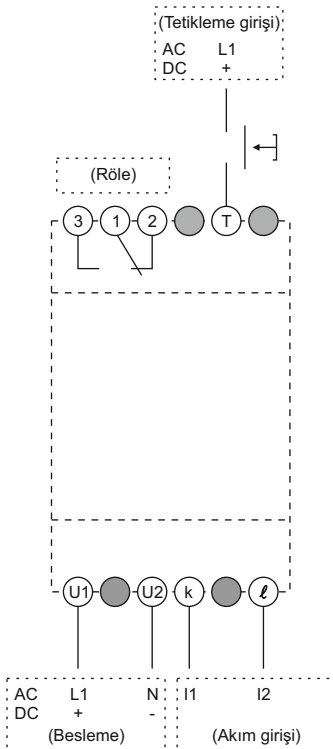
CPR-16

270 270

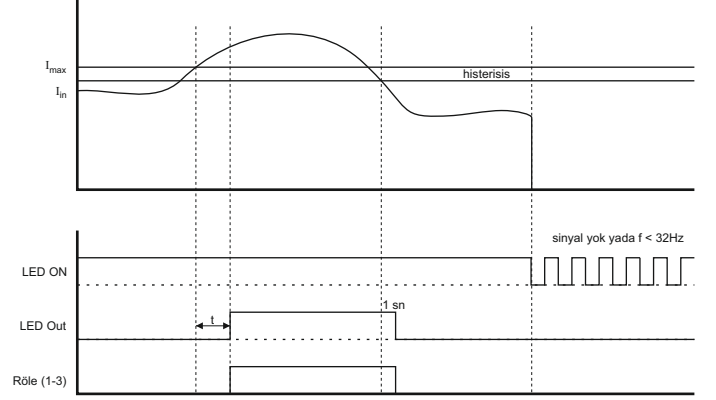
## teknik özellikler

İşletme gerilimi ( $U_N$ )	36 .. 300V AC 24 .. 300V DC
Çalışma frekansı	35 .. 70 Hz
Güç tüketimi	< 1W < 3VA
Akım ölçüm aralığı	0.1 .. 17AAC
Akım limiti ayar aralığı	1 .. 16AAC
Maksimum giriş akımı	100A (1sn)
Histeresis ayar aralığı	%5 .. %20
Gecikme süresi ayar aralığı	0.1 .. 10 sn
Çalışma modları	Otomatik, manuel
Kontrol girişi sinyali	$U_N$
Çalışma sıcaklık aralığı	-20°C .. 60°C
Saklama sıcaklığı	-40°C .. 75°C
Çıkış kontağı	1 C/O
Maksimum anahtarlama akımı	16A
Maksimum anahtarlama gerilimi	250V AC
Maksimum anahtarlama gücü	4000VA
Koruma sınıfı	IP20
Bağlantı şekli	Raya montaj

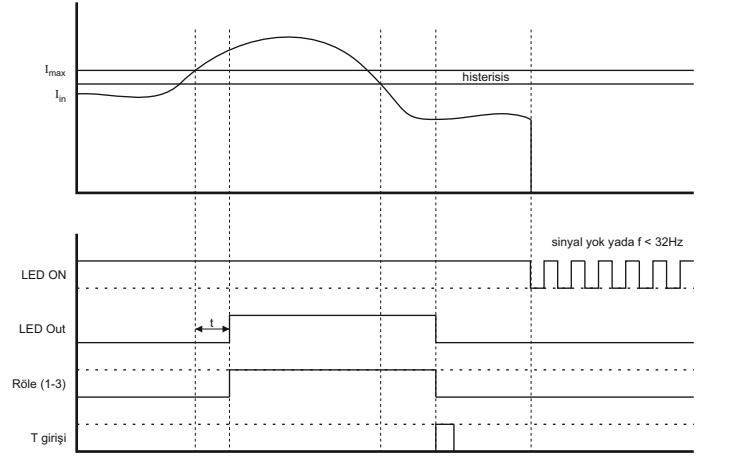
## bağlantılar



## fonksiyon gösterimi

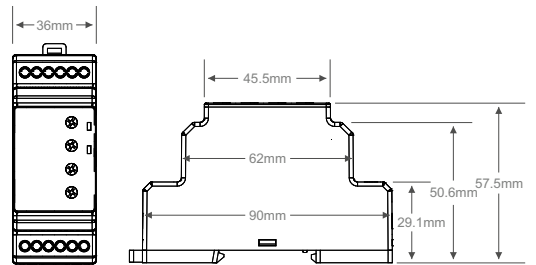


Otomatik mod



Manuel mod

## boyutlar



# Klemsan<sup>®</sup> CPR-16

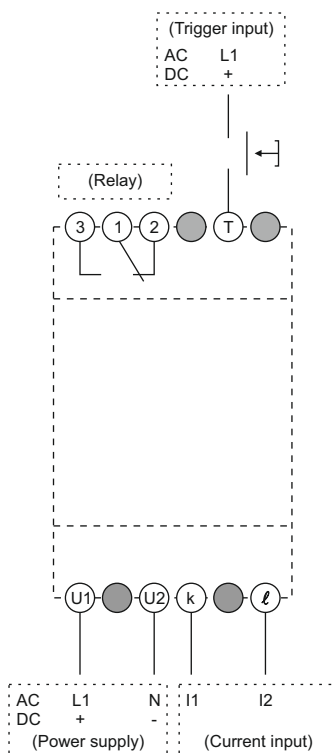
## Current Protection Relay

type	order no
CPR-16	270 270

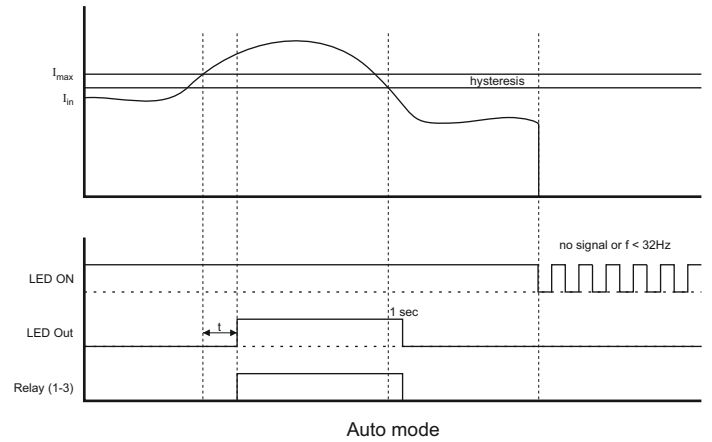
### technical specifications

Operating voltage ( $U_N$ )	36 .. 300V AC 24 .. 300V DC
Operating frequency	35 .. 70 Hz
Power consumption	< 1W < 3VA
Current measurement range	0.1 .. 17AAC
Current limit adjustment range	1 .. 16AAC
Maximum input current	100A (1sec)
Hysteresis adjustment range	%5 .. %20
Time delay adjustment range	0.1 .. 10 sec
Operating modes	Auto, manual
Control input signal range	$U_N$
Operating temperature	-20°C .. 60°C
Storage temperature	-40°C .. 75°C
Output contact	1 C/O
Maximum switching current	16A
Maximum switching voltage	250V AC
Maximum switching power	4000VA
Protection class	IP20
Connection	Rail mounted

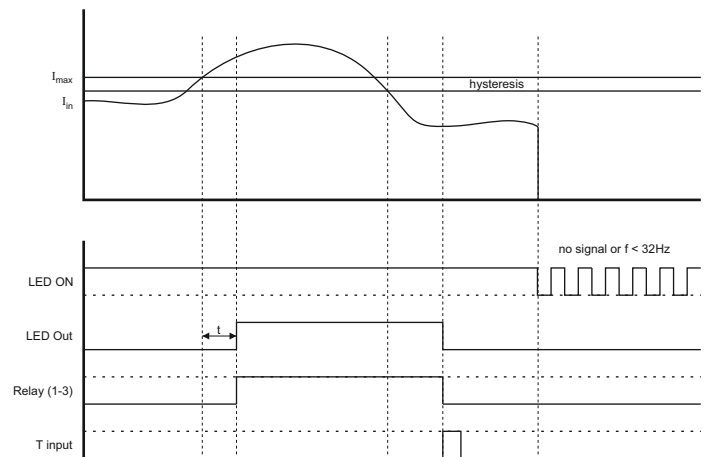
### connections



### function diagram



Auto mode



Manual mode

### dimensions

