

C80-1M-V3

Klemsan

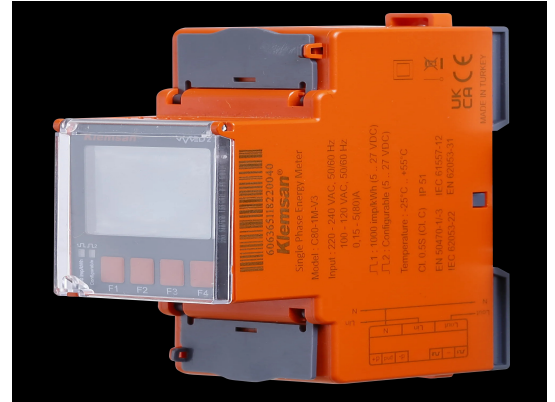
606365

1Ø MID Energy Meter

Category: Energy Management Products

Type: Energy Meters

Group: Electronics Products



Commercial Information

Package Unit	1 pcs.
Customs Tariff Number	903032009011
Weight Per Unit Including Packaging	0.12

Technical Information

GENERAL	
Connection Type	1P2W
Real Time Clock	+
Current Connection Type	Direkt Baglantili (45A ya kadar)
Alarm	-
ENERGY MEASUREMENT	

Energy Measurement Type	Import & Export kWh-kVArh
Partial Counter	+
Balance Energy	+
Number of Tariffs	2
Number of Sub Tariffs	4
Number of Reactive Measurement Zones	2
CURRENT MEASUREMENT INPUT	
Measuring Range	0,05 .. 6A
VOLTAGE MEASUREMENT INPUT	
Measuring Range L-N	100-300V AC
Measuring Range L-L	-
POWER QUALITY MEASUREMENTS	
Harmonic Measurement / Current and Voltage	-
THDI	+
THDV	+
POWER SUPPLY	
Voltage	100-300V AC
Frequency	45-65Hz
Consumption	<3VA AC
MECHANICAL PROPERTIES	
Weight (g)	120
Protection Class	IP20
Mounting Type	Rail Mount

ENVIRONMENTAL CONDITIONS	
Operating Temperature	-25°C +50°C
Storage Temperature	-25°C +70°C
Relative Humidity (Non-condensing)	Max. 80% (no condensation)
COMMUNICATION	
Protocol	Modbus RTU
Baud Rate	1200-115200
Parity	Odd, Even, None
Stop Bit	1
Slave ID	1-247
Isolation	2750V RMS
DIGITAL OUTPUT	
Frequency	5-30 VDC
Number of Inputs	2 (1 sabit, 1 ayarlanabilir)
Switched Voltage Range	Transistor
Isolation	3750 Vrms
DIGITAL INPUT	
Isolation	-
Number of Inputs	-
Input Type	-
OTHER MEASUREMENTS	
Operating Time Counter	-
Open Time Counter	-

Power Failure Counter	-
BASIC ELECTRICAL MEASUREMENTS	
Current	+
Voltage	+
Frequency	+
Active Power	+
Reactive Power	+
Apparent Power	+
CABLE CROSS-SECTIONS POWER SUPPLY, VOLTAGE, RELAY	
Multi-Core	-
Single Core	-
CABLE CROSS-SECTIONS CURRENT	
Multi-Core	-
Single Core	-
CABLE CROSS-SECTIONS DIGITAL INPUT/OUTPUT, RS485, ANALOG OUTPUT	
Multi-Core	-
Single Core	-
MEASUREMENT CLASS	
EN 50470	Class C
62053-21	-
MEASUREMENT	
Max, Min Data	-
Demand	+

LED (Impulse)

kWh	+
kVArh	+