

BLOW MOLD VACUUM VALVE

3/2 Directional Control Valve - Normally Closed - Pressure Operated

- High-speed poppet construction
- Constant repeatability
- Specialised low-wear body-coating
- Hard piston coating
- Non-lube
- Built-in steel filter
- EMHART interface
- Integrated handle
- Special versions available



DESIGN

Poppet Valve: Viton-seals on metal seat.

Body: Aluminum alloy, anodized.

Piston: Hard coated, original OEM steel filter.

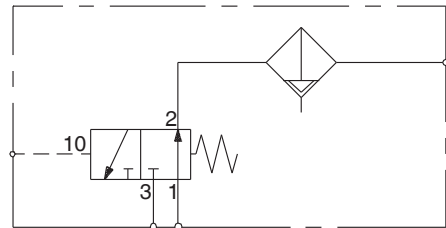
STANDARD SPECIFICATIONS

Flow Medium: Vacuum service.

Ambient Temperature: -17° to 150° C (0° to 300° F).

Media Temperature: -17° to 150° C (0° to 300° F).

Model Number: D2154A6907



We reserve the right to introduce technical modifications.

Dimensions - mm (inches)

