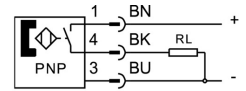
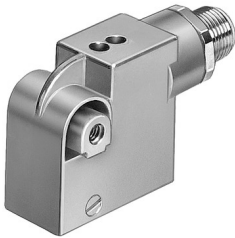


Proximity sensor SMTSO-1-PS-S-LED-24

Part number: 30441

FESTO



Data sheet

Feature	Value
Type code	SMTSO
Design	Block design
Symbol	00991153
Certification	RCM compliance mark
CE marking (see declaration of conformity)	As per EU EMC directive
Special features	Resistant to welding spatter Welding field resistant
Note on materials	Free of copper and PTFE
Measured variable	Position
Measuring principle	Magneto-inductive
Ambient temperature	-25 °C ... 70 °C
Switching output	PNP
Switching element function	N/O contact
Reproducibility of switching value	+/- 0.1 mm
On time	35 ms
Switch-off time	20 ms
Max. output current	200 mA
Max. switching capacity DC	6 W
Voltage drop	3 V
Residual current	0.01 mA
Short-circuit protection	Pulsed
Overload protection	Available
DC operating voltage range	10 V ... 30 V
Reverse polarity protection	for all electrical connections
Electrical connection	Plug 3-pin M12x1
Connection outlet orientation	Longitudinal
Max. tightening torque plug	0.3 Nm
Type of mounting	With accessories
Tightening torque	<0.3 Nm
Product weight	70 g
Housing material	PUR PA Die-cast zinc
Ready status indication	LED green
Switching status indication	LED yellow

Feature	Value
Degree of protection	IP67
Resistance to interference from magnetic fields	Alternating magnetic field 50 - 60 Hz