

Streamlined remote access solutions for Siemens PLC systems

Discover how you can provide remote service with full access to your Siemens PLC, in an easy and secure way.

1. [Remote VPN access to Siemens PLC with IXON Cloud](#)
2. [Siemens PLCs supported by IXON](#)
3. [IXrouter: Industrial VPN router for Siemens PLC](#)
4. [How to connect the Siemens PLC with the IXON Cloud](#)
5. [Remote control of Siemens HMI and other connected PLC equipment](#)
6. [How to extract data from Siemens PLCs with IXON Cloud](#)
7. [Discover IXON Cloud for remote access to your Siemens PLCs](#)

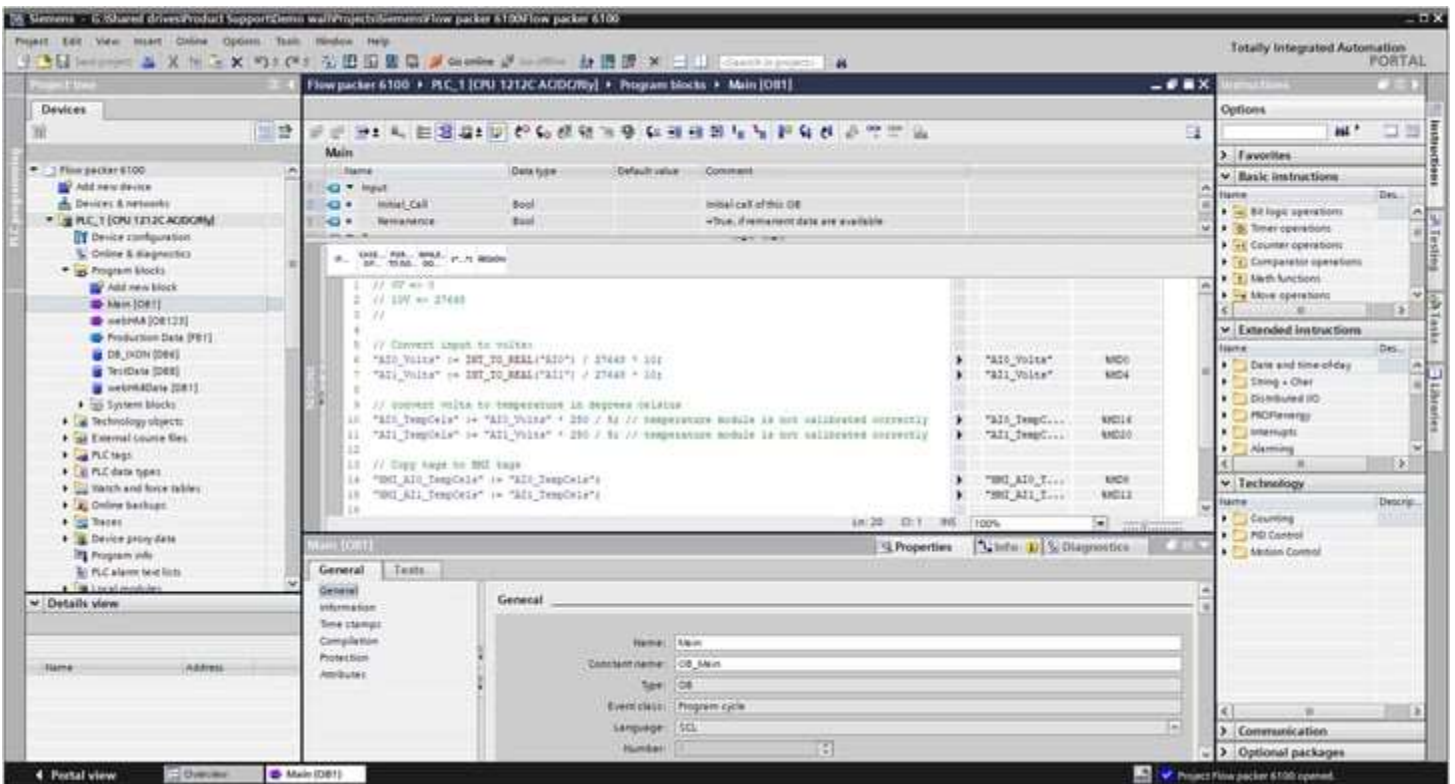
Remote VPN access to Siemens PLC with IXON Cloud

IXON offers a powerful [remote access](#) solution and [industrial IoT platform](#) for the Siemens PLC range: IXON Cloud. It enables machine builders and system integrators to get easy, fast and secure remote VPN access to the programming software and network of Siemens. From anywhere at any time.

Benefits of IXON Cloud for Siemens PLC devices:

- Direct connection between the TIA Portal programming tool on your computer and your machine on the other side of the world.
- All-in-one solution where hardware and cloud work together seamlessly, which makes it easy to configure with the Plug & Play setup
- Web-based cloud portal and mobile app for secure and fast access to all your devices
- User-friendly through the intuitive and customisable interface
- Top-notch [security level](#), thanks to the built-in firewall and IXON's dedicated security experts
- Unlimited users without licenses to optimally work together with colleagues, partners and customers
- Scalable to your (customers') needs in terms of number of machines and users, integrations and additional features such as data logging and alarms.

[Explore all features](#)



Set up a direct connection between the TIA Portal programming tool on your computer and your machine on the other side of the world.

Siemens PLCs supported by IXON

- Siemens S7-200
- Siemens S7-300
- Siemens S7-400
- Siemens S7-1200
- Siemens S7-1500
- Siemens LOGO!
- And older Siemens PLCs with an ethernet module.

If your type isn't listed here, please [get in touch](#) with us to check the compatibility of your product.

IXrouter: Industrial VPN router for Siemens PLC

To access your Siemens PLC remotely, IXON has developed the IXrouter. The IXrouter is a combined Industrial VPN router and [IoT edge gateway](#) that is fully compatible with Siemens PLCs and many more PLC brands. The IXrouter enables cloud connectivity to your PLC for remote programming, remote monitoring and remote troubleshooting. It also allows additional services like VNC and HTTP to access local web servers and control HMI panels.



Each IXrouter has four ethernet ports for connecting machines (PLCs and machine networks) and robots, and one WAN port to connect it to the internet. There are multiple versions of the IXrouter supporting additional ways to get internet access:



- Ethernet only
- Ethernet & 4G/LTE
- Ethernet & Wi-Fi
- Ethernet, 4G/LTE & Wi-Fi

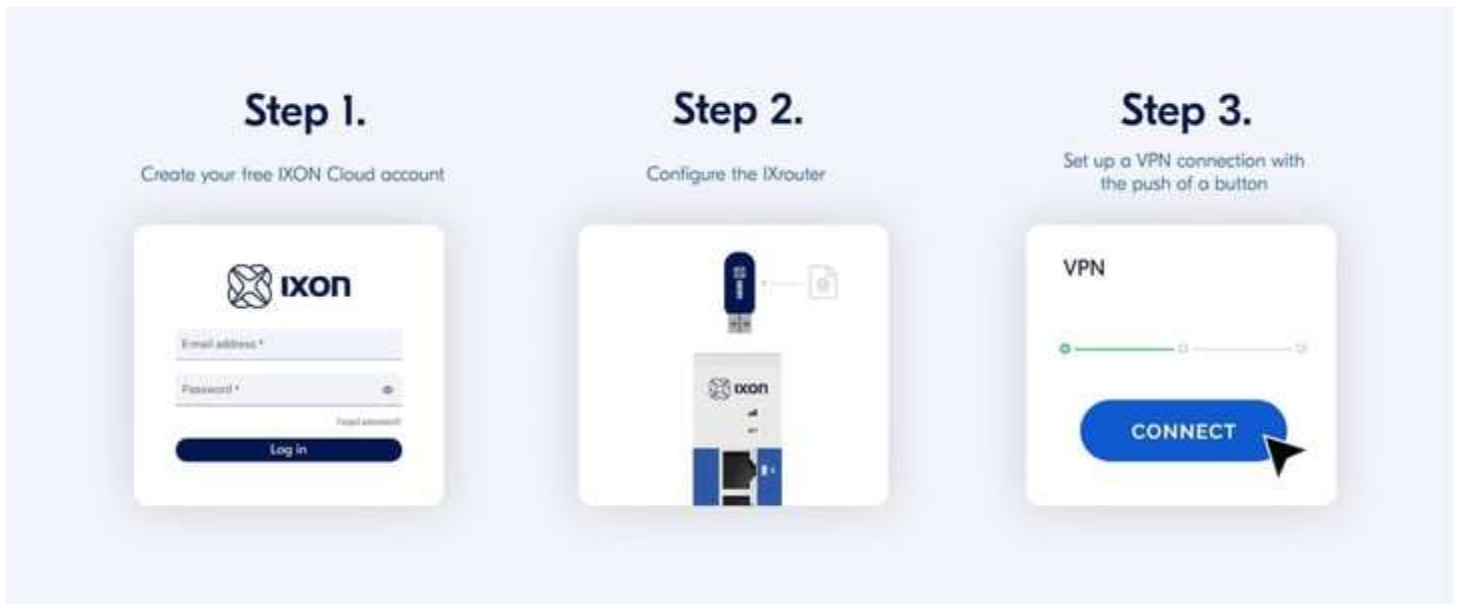
It's ready to handle almost any conceivable situation. IXrouter models with Wi-Fi can simultaneously serve as a Wi-Fi client, where it connects to the internet via Wi-Fi, and as a [WiFi hotspot](#). The Wi-Fi hotspot can be used to wirelessly access your PLC, HMI or other hardware on-site or allow them internet access.

Each IXrouter has the option to activate Cloud Logging and Cloud Notify. Simply choose a way to get internet access, connect your PLCs and you're all set.

How to connect a Siemens PLC with IXON Cloud

Once you have the IXrouter, you can easily connect your Siemens PLC to the IXON Cloud portal. Just follow 3 simple steps, and it's done in minutes thanks to the Plug & Play set up. Create an IXON Cloud account, configure the IXrouter and set up a secure VPN connection to connect your PLC to the IXON Cloud.

Once your IXrouter device is activated, you can log into your IXON Cloud account to set up a secure VPN connection to your Siemens PLC. Choose the device you want to connect to and press the VPN button. Now, a secure VPN tunnel is created from your computer, via the IXON Cloud to your connected machine.



Remote control of Siemens HMI and other connected PLC equipment

With remote access to your Siemens PLC you can monitor and manage what happens in your machine. To get the full picture of the machine status IXON Cloud offers additional access options. We support VNC and HTTP services. This means you can remotely view and control local web servers and HMI panels (e.g. the Siemens SIMATIC HMI) without needing a VPN client.

Remote monitoring Siemens SIMATIC HMI via VNC

An HMI remote monitoring option is available using the VNC protocol. View, access and fully control your HMI screen (such as SIMATIC Comfort Panel, DiagMonitor, WinCC) remotely via your browser or mobile apps.

Remote access to Siemens PLC web server

Connect your Siemens PLC web server easily using the HTTPS protocol. Just configure the location of your web server and open it securely from anywhere.



How to extract data from Siemens PLCs with IXON Cloud

Via the IXrouter you can log and store data from your PLC in IXON Cloud. This gives you the opportunity to visualise data and build real-time or historical dashboards. Result: easier failure analysis and opportunities to offer additional services.

The IXrouter supports several industrial protocols to automatically read data from Siemens PLCs. Data can be transmitted to the IXON Cloud to make it available for data visualisation, data analysis, alarms, or integration with external platforms via the API:



Supported protocols for Siemens PLC:

- Siemens S7 (supported by Siemens Step 7 series: S7-300/400/1200/1500)
- OPC-UA ([compatible devices](#))
- Modbus TCP for Siemens LOGO!

With [cloud data logging](#) you can configure the data protocol and device address from your IXON Cloud account without any coding. Push the configuration settings to the IXrouter and it will automatically read the data and store it on the IXON Cloud.

Tip! Did you know you can also write data to your Siemens PLC from IXON Cloud? Read more about how you can do this [here](#).

Create a dashboard with Siemens PLC data

Once your data is collected from your PLC and securely stored in IXON Cloud, you can use it to configure [custom dashboards](#). With the drag & drop editor, you can add widgets and build multiple dashboards based on the collected data. Add a gauge, period, tables or graph widget to create a data report or live monitor for your machines. IXON's [API](#) makes it possible to combine PLC data with data from other sources.

Set up predictive maintenance alarms for Siemens PLCs

To create and receive alarms from your machines you need to activate IXON's [alarms & notifications](#) in your account. Choose the variable, the priority, set the condition and instructions for the operator. Next, define who must receive a mobile push message or email when the alarm is triggered.

Discover IXON Cloud for remote access to your Siemens PLCs



Experience the ease of use of the IXON Cloud platform yourself through the interactive tour. Sign up to get access and browse around in our demo platform. Test our remote access tools and explore how to customise the platform to your specific needs. Free of obligation.