



IXON

Catalog

Contents of the IXON Catalog

01

About IXON	03
Architecture	04
Security	04

02

IXON Cloud portal	05
Remote access	06
Data logging & dashboards	07
Alarms & notifications	08
Customizing IXON Cloud	09
White labelling	10
M2M Cloud Cluster	11
Service level agreement	12

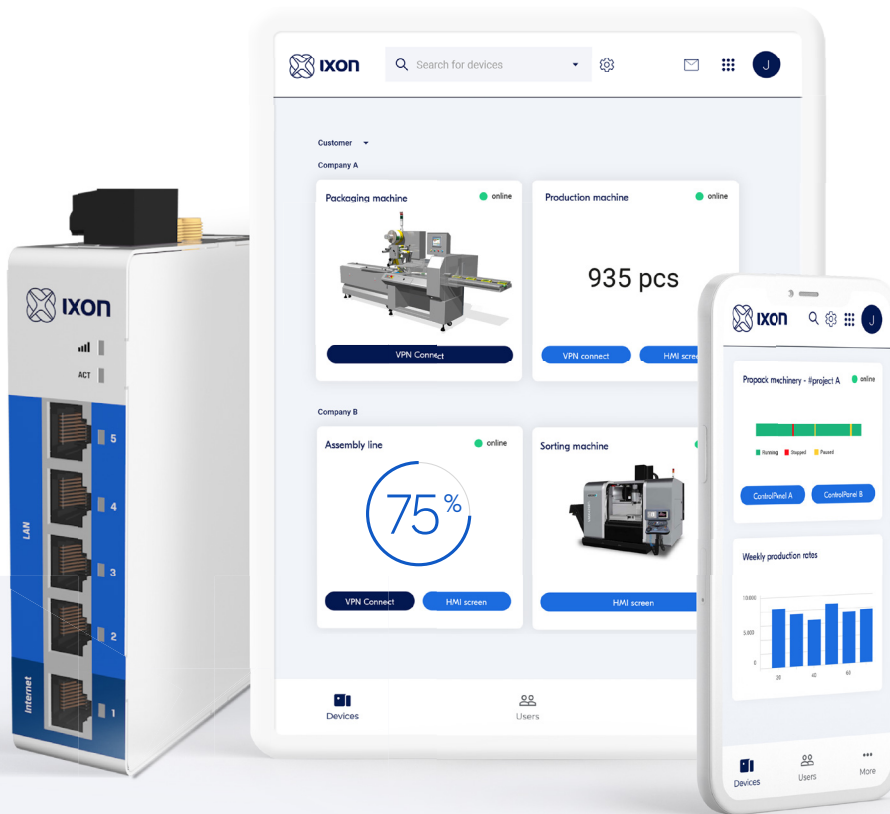
03

IXON edge gateways	13
IXrouter3	13
IXagent	14
Accessories	15

04

Company information	17
----------------------------	-----------





01 About IXON

At IXON, we support machine builders all over the world with the right ideas and tools to improve performance over the entire lifecycle of their machines. From improving uptime during production to getting the right insights in machine data for the development of a fully optimized machine design.

The all-in-one IXON Cloud solution helps machine builders with a step-by-step implementation of Industrial IoT with features such as remote access, data logging, dashboards and alarming.

IXON Cloud offers machine specific information services, allows for integration with third party tools, and enables you to customize the whole solution. We provide you with the technology,

from Edge to Cloud, so you can continue with what you do best: collaborate with customers, provide service, and share insights.

In this catalog you will find all technical details and article numbers of features and services you can add to our off-the-shelf solution, to make it unique and tailored to your specific needs.



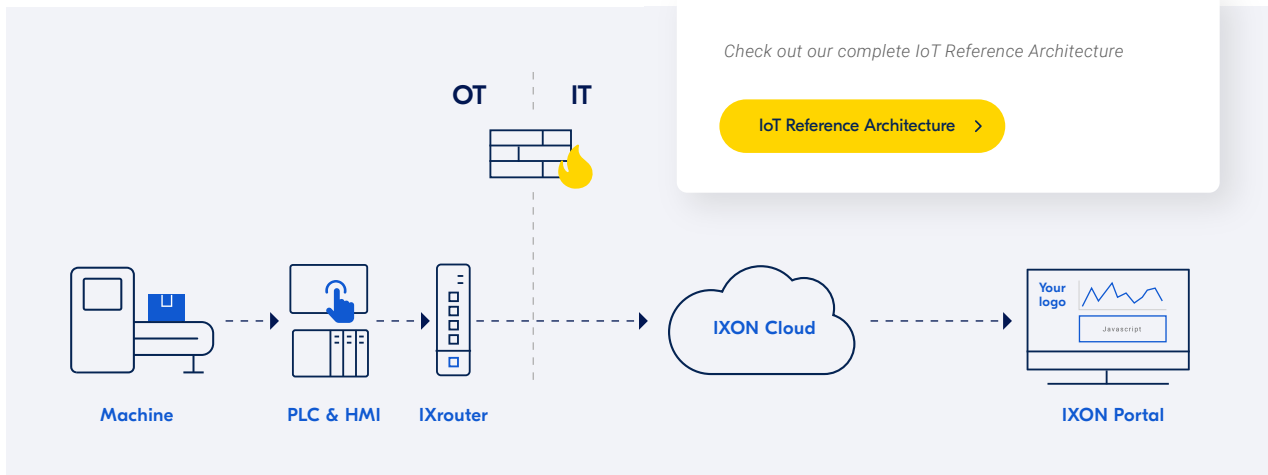
IXON Cloud architecture

The **IXrouter edge gateway connects** a machine from a production plant securely to IXON Cloud. It can pull data using protocols and push data to the gateway using a plain TCP protocol. The edge gateway also acts as a firewall to separate and protect all equipment inside the machine from the local IT/OT network.

The IXON Cloud platform consists of a wide range of features, making it possible to access equipment remotely, to collect and analyze data,

and to collaborate with your customers. Besides, its user interface can be customized with countless drag-and-drop widgets, custom components and white labelling options for hardware as well as for software and the mobile app.

IXON Cloud is ready for integration with other systems like ERP-systems and BI-tools over the Application Programming Interface (API).



Security

At IXON, security is the cornerstone of everyday operations. An extensive ISO 27001 certified Information Security Management System and the associated best practices guarantee that we always give information security the focus it deserves.

- No security incidents
- No data loss
- 99,9% uptime



Thanks to a systematic approach, we identify, prevent and defend IXON Cloud against potential vulnerabilities and we safeguard the confidentiality, integrity and availability of your business-critical information.

For more information about how IXON secures and structures its servers, check out our security white paper

[Security white paper >](#)



02 IXON Cloud portal

Benefit from the ease of our edge to cloud Industrial IoT solution. The IXON Cloud portal is fully cloud-based and leverages all tools to connect, collaborate and collect insights to improve your machines, provide better service and stay involved during the entire lifecycle of the machine.



Connect

IXON Cloud offers all the possibilities to remotely program, commission and monitor your machines from your own webportal in a secure way. Wherever you are, whenever you want.

- ✓ Edge gateways
- ✓ Remote access (VPN, VNC & HTTP)



Analyze

Analyze and optimize systems and processes using machine data. Present fault codes and performance in machine dashboards, take action when needed and predict maintenance with alarms.

- ✓ Data logging
- ✓ No-code interface studio
- ✓ Alarms & notifications



Collaborate

Collaborate with customers and partners from your own service portal. Manage users access and rights and make the entire solution recognizable with your own corporate identity.

- ✓ Fleet Manager
- ✓ Advanced user management
- ✓ White labelling



Customize

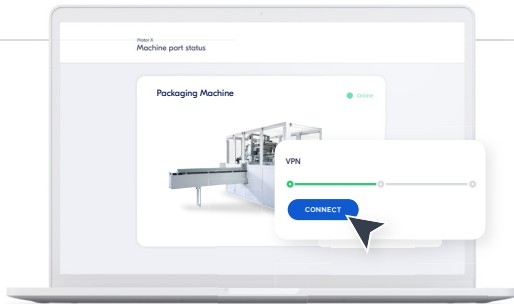
Combine the power of a proven standard with the unique capabilities of a custom application. Integrate with external systems (CRM, ERP, BI) and build your custom app on top of a solid and secure foundation.

- ✓ Custom components
- ✓ API
- ✓ Integrations



Remote access

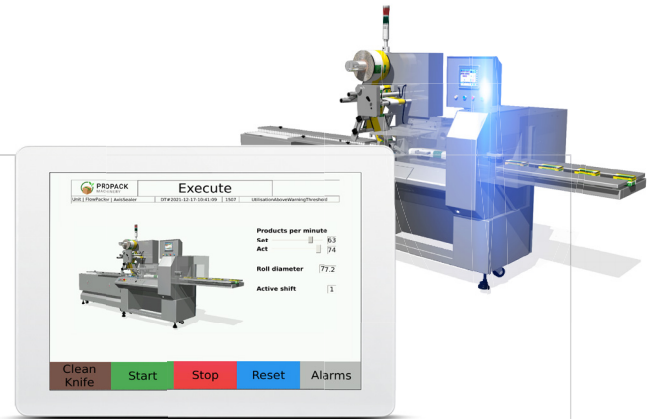
Take a look inside your machine from anywhere, at any time. Control, monitor, service and maintain your machine throughout its entire lifecycle in one central platform with remote PLC access.



VPN

Set up a stable and high-speed remote connection to your PLC, HMI, IPC robots & IP cameras from your browser through VPN. Your machines will automatically connect to the nearest VPN server in the IXON Cloud network.

- Features**
- ✓ 100% web-based
 - ✓ AES-256 bit encryption
 - ✓ Unlimited concurrent connections
 - ✓ Mobile VPN support for Android and iPhone
 - ✓ Support for multiple subnets in a machine
 - ✓ VPN client available for Windows, Linux and MacOS
 - ✓ Worldwide VPN infrastructure for fast, stable and low latency connectivity



VNC and Web Access

Instant access to your control panels via your mobile device without the need for local VPN clients. Control your HMI or local web server directly from IXON Cloud or IXON app and view diagnostic information, status and more.

- Features**
- ✓ 100% web-based
 - ✓ No need to install a VPN client or run a VPN connection
 - ✓ Devices with built-in VNC or HTTP web server supported
 - ✓ Allow customers to access your machines
 - ✓ Websocket support for API integrations
 - ✓ Outbound connection only
 - ✓ Connect to your HTTP web server via an HTTPS connection



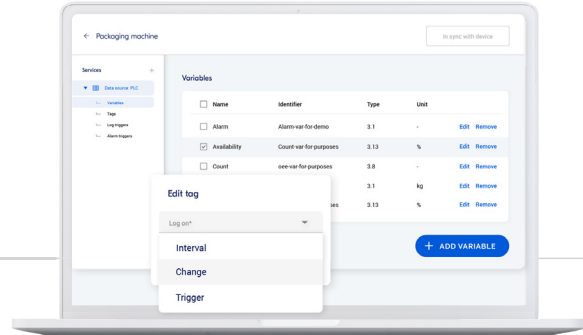
Free of charge

There is no limitation on the number of users and simultaneous connections. For data transfer there is a Fair Use Policy: When data transfer exceeds 10GB per month per company account, IXON has the right to pinch the speed (data throttling).



Data logging & dashboards

Securely collect and store unlimited data in the cloud for as long as you require.



Cloud Logging

Easily access machine data from anywhere at any time. Data is transferred from the IXrouter to IXON Cloud, and is securely stored and centrally available. To get clear insights into machine state, performance and condition, your data can be visualized in customizable dashboards.

Features

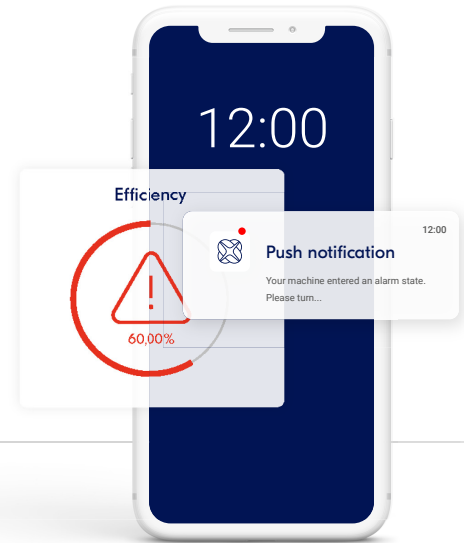
- ✓ No-code online configuration
- ✓ Real-time and historical data collection
- ✓ Dashboards directly viewable from any device
- ✓ Open for integration
- ✓ Secure by design
- ✓ Various industrial protocols supported:

- OPC UA
- Siemens S7
- Ethernet/IP
- Modbus
- MELSEC
- Logger API
- BACnet/IP
- SMTP/GPIO



Alarms & notifications

Get instantly informed about a machine failure or if maintenance is required with reliable alarms through IXON Cloud.



Set your own notification preferences so the right people are informed in the right way: via email, push notifications or webhooks, and send instructions along about how to resolve the issue. Benefit from an unlimited number of push messages, emails, recipients and triggers with IXON's Cloud Notify.

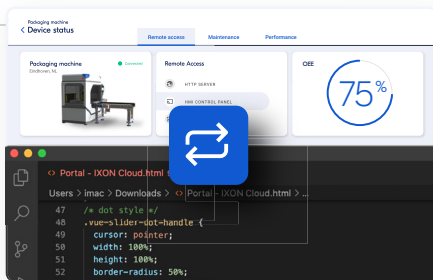
Features

- ✓ Broad support of protocols
- ✓ 100% delivery of notifications
- ✓ No need to install and maintain SMTP servers
- ✓ No programming required
- ✓ Connectivity alarms
- ✓ Alarm logs available per machine
- ✓ Open to integrate with external services via API or webhooks



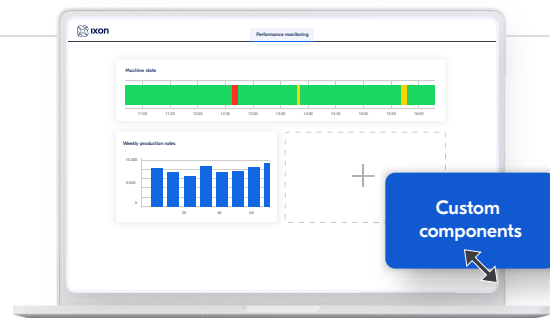
Extending IXON Cloud

Customized the IXON Cloud platform to fit your specific needs, to match it perfectly with your machines and the way you want to use your Industrial IoT solution.



API

IXON Cloud consists of a REST API and webhooks which ensures endless possibilities to exchange data with any third-party tool you're using, such as Zapier or PagerDuty. Using the IXON Cloud API you get complete access to all IXON Cloud functionalities and collected machine data. This way you can manage, configure and access your devices, users and data in any application or integration with external SaaS platforms.



App Engine

IXON offers the opportunity to create your own components, on top of the countless standard components IXON offers by default. This enables you to create dashboards that completely fit your needs – without worries about maintenance and long development cycles. The Component SDK (Software Development Kit) makes it easy to create your own components and publish them in IXON Cloud.



White labelling

Make IXON Cloud look as if it's your very own IoT platform and make it recognizable for your customers with our white labelling options.



White labelled front foils

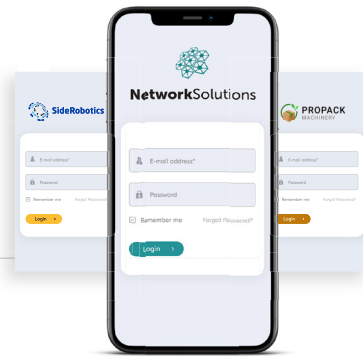
Want the hardware to have your corporate identity as well? We can provide custom white labelled front foils to change the logo on your IXrouter and make IXON invisible.

White labelling

Product Code	Product Name
IX4001	IXrouter White Label package - 250 front labels incl. design



After placing the order, the design will be decided upon in consultation. IXON produces the front foils, after which you can apply them to the IXrouters.



White labelled smartphone app

Get a custom white labelled version of the IXON app published in the app store. The app will be published and maintained by IXON on behalf of your company.



M2M Cloud Cluster

Benefit from a dedicated network and permanent VPN connection between all devices with the M2M Cloud Cluster add-on.



The M2M Cloud Cluster enables you to remotely access all your machines simultaneously (one to many) or enables machines to communicate with other machines (many to many). Manage up to 1.500 devices within one single M2M Cloud Cluster and use all existing IXON Cloud features.

Features

- ✓ Low-latency VPN network
- ✓ Easily add devices as you grow



Service level agreement

The IXON service level agreement guarantees the highest level of availability of your IoT platform, and gives you 24/7 direct access to our operations team.



IXON Cloud offers the highest availability and stability, and our support team is ready to help you with your implementation questions. Additionally, our service level agreement (SLA), which is optional, ensures the highest level of service for your IoT platform.

Features

- ✓ Guaranteed 99,9% availability of IXON Cloud
- ✓ Guaranteed VPN performance (bandwidth and packet loss)
- ✓ 24/7 access to IXON's operations team
- ✓ Guaranteed response time



03 IXON edge gateways

Connect your machines to IXON Cloud using IXON edge gateways. Easy to configure and install, complete with an integrated firewall.



IXrouter3

Our edge gateways come in different types with multiple connectivity options, such as Ethernet, 4G/LTE and Wi-Fi.

Edge gateways				
Product Code	Product Name	Ethernet	Wi-Fi	4G
IX2400	IXrouter3 Ethernet	✓	✗	✗
IX2405	IXrouter3 4G/LTE	✓	✗	✓
IX2410	IXrouter3 Wi-Fi	✓	✓	✗
IX2415	IXrouter3 4G/LTE & Wi-Fi	✓	✓	✓

Take a look at our **IXrouter3 user manual** for more detailed information about hardware specifications and certifications.

[User manual >](#)



IXagent

The IXagent is a software agent to easily connect devices with various operating systems to IXON Cloud without the use of additional hardware.

IXagent versus IXrouter

Description	IXrouter	IXagent
Lifelong VPN	✓	✓
User Management with 2FA	✓	✓
Data logging / alarms	✓	✓ Limited protocols
Runs on PC/PLC hardware	✗	✓
Built-in firewall	✓	✗
5x 1GBs LAN/WAN ports	✓	✗
Routing	✓	✗

Operating systems: <ul style="list-style-type: none"> ■ Ubuntu ■ Debian 	<ul style="list-style-type: none"> ■ Raspberry PI ■ Windows ■ and more... 	Devices: <ul style="list-style-type: none"> ■ WAGO ■ Berghof 	<ul style="list-style-type: none"> ■ PLCnext ■ and more...
--	--	---	--

IXagent

Product Code	Product Name
IXP504	IXagent - Lifetime license for one device



Accessories



Find the right antenna for every situation to mount to your IXrouter.

Cellular antennas

	<i>Product Code</i>	<i>Product Name</i>
	IX2201	4G/LTE Pentaband antenna rotatable
	IX2202	3G Pentaband antenna magnetic mount with 2m cable
	IX2203	3G Pentaband antenna screw mount with 3m cable, IP67
	IX2205	4G/LTE Wideband antenna screw mount with 3m cable, IP67
	IX2206	4G/LTE Wideband antenna magnetic whip with 3m cable




Wi-Fi antennas

	<i>Product Code</i>	<i>Product Name</i>
	IX2210	Wi-Fi antenna monopole 3cm
	IX2211	Wi-Fi antenna screw mount with 3m cable, IP67

Power supply

IXON offers a ready-to-use power supply for the IXrouter.

Power supply

	<i>Product Code</i>	<i>Product Name</i>
	IX2207	Wall mount power supply for IXrouter



04 Company information

Postal address

228 E. 45th Street, Suite 9E
New York, NY 10017
United States

Phone

+1 (773) 668-0255

E-mail contacts

General	info@ixon.cloud
Orders	sales-us@ixon.cloud
Support	support-us@ixon.cloud

Websites

Corporate website	www.ixon.cloud
IXON Cloud login	portal.ixon.cloud
Support	support.ixon.cloud
Developer portal	developer.ixon.cloud
IXON Cloud status	status.ixon.cloud
IXON Community	answers.ixon.cloud